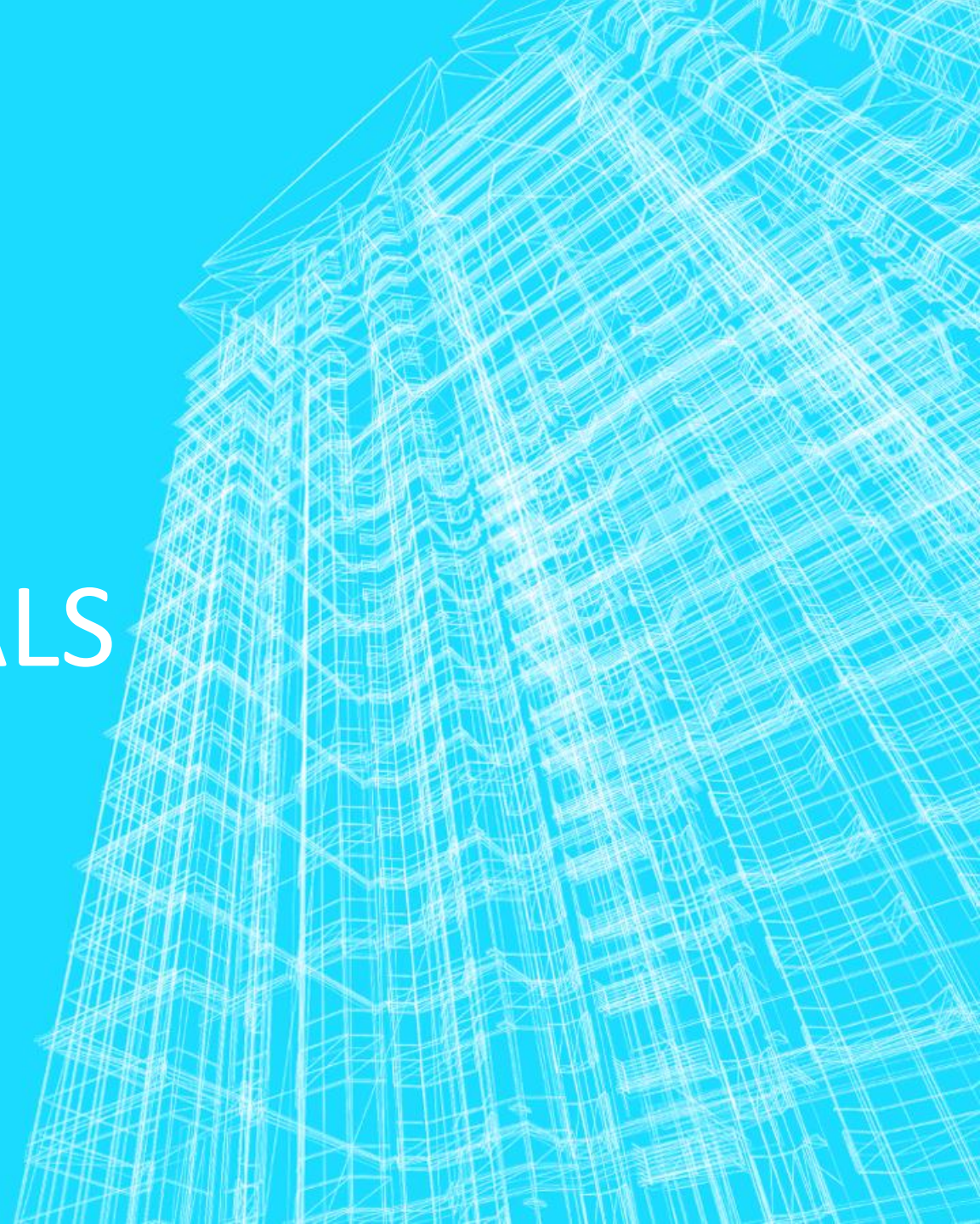


ROYAL TRAINS –
VICE REGAL AND
PRESIDENTIAL SPECIALS



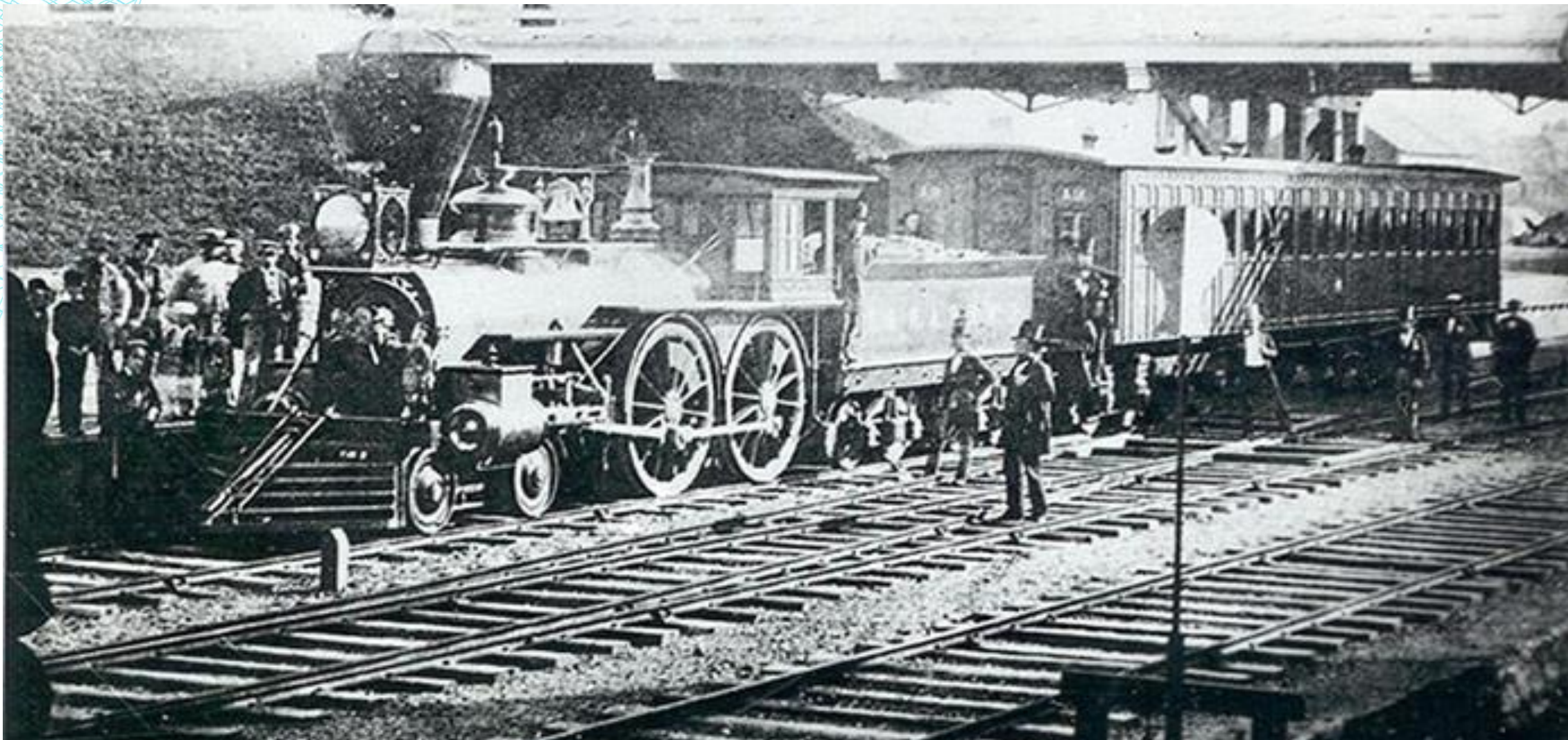


TITLE AND CONTENT

- Royals – Visiting members of British Royal Family and others.
- Vice Regal – Governor Generals –appointed by Parliament.
- US Presidents tours – visits.

FIRST ROYAL TOUR JULY 1860.

PRINCE OF WALES – H.R.H. PRINCE ALBERT EDWARD – 18 YEARS OLD.
SAINT JOHN NB TO ROTHSAY STATION. E&NA RLY.



PRINCE OF WALES – H.R.H. PRINCE ALBERT EDWARD - CONTINUES TO LOWER CANADA - MONTREAL

**1860 GTR Locomotive 109.
Built for Royal tour**

**1890 Special observation car for
opening of the Victoria Bridge.**

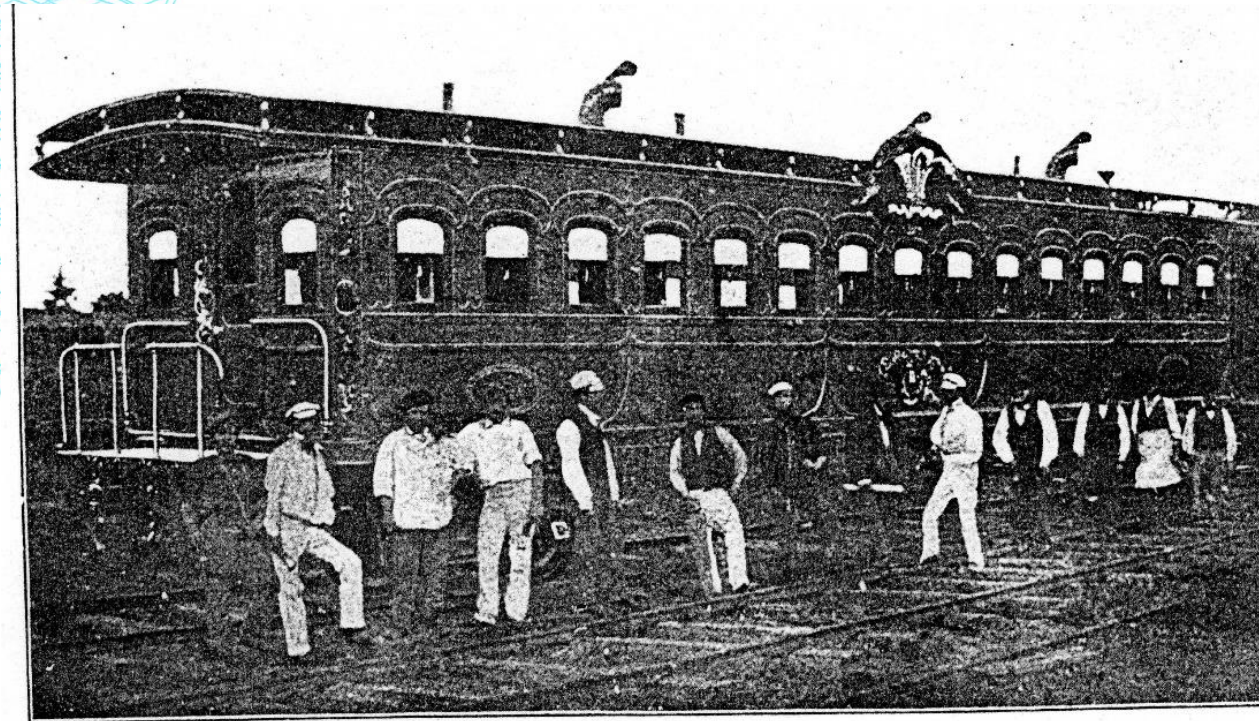


Specially built open train car used by the Prince of Wales and his party at the opening of the Victoria Bridge, Montreal

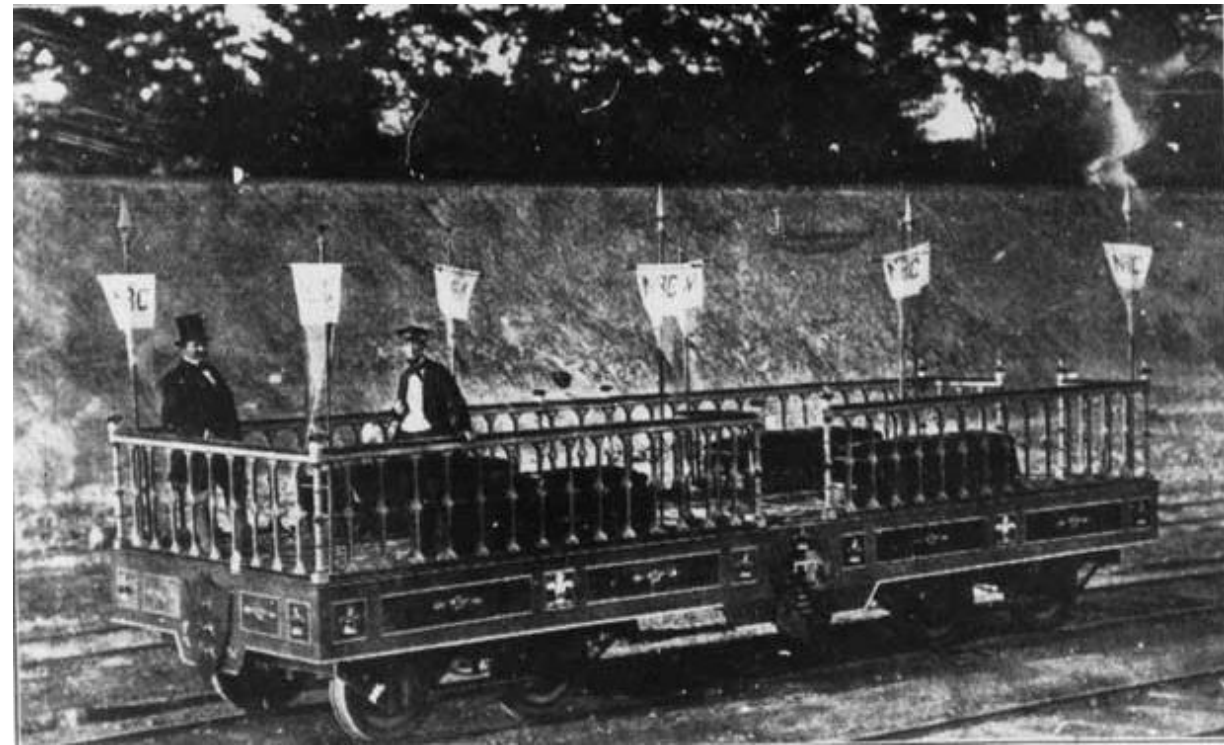
PRINCE OF WALES HRH PRINCE ALBERT EDWARD CONTINUES TO UPPER CANADA – TORONTO.

First sleeping car – Brantford, Ont.
Brantford & Lake Erie Rly.

Open Observation car on the
Northern Rly Of Canada.



CAR USED BY THE PRINCE OF WALES, NOW KING EDWARD VII., IN CANADA, 1860.




1860 -TORONTO TO LONDON – GTR WEDNESDAY, SEPTEMBER 12, 1860

Toronto to London via GTR.

Panel survives in a Free Masons Lodge.

Royal Train!

GRAND TRUNK RAILWAY.



TORONTO TO LONDON.

Wednesday, 12th September, 1860.

Leave	Hour, Mins., Sec.	STATIONS.	TORONTO TIME.	Arrive	Hour, Mins., Sec.	STATIONS.	TORONTO TIME.
1	11.00 a. m.	Toronto	11.00 a. m.	7	57	SHANTZ	1.35 p. m.
4	11.06 "	GRAND JUNCTION	11.06 "	2	59	BRESLAU	1.40 "
21	11.15 "	CARLTON	11.15 "	5	04	Berlin	1.52 "
21	11.22 "	WESTON	11.22 "	6	70	PETERSBURG	2.04 "
7	11.27 "	MALTON	11.27 "	3	73	BADEN	2.12 "
6	11.50 "	BRAMPTON	11.50 "	3	76	HAMBURGH	2.15 "
5	12.00 m.	NOEVAL	12.00 m.	7	53	SHAKSPEARE	2.32 1/2
3	12.10 p. m.	Georgetown	12.10 p. m.	6	59	Stratford	2.44 a.
21	12.18 "	LIME HOUSE	12.18 "	10	99	St. Mary's	3.15 p. m.
21	12.29 "	ACTON WEST	12.29 "	11	110	THORNDALE	3.38 "
6	12.42 "	ROCKWOOD	12.42 "	10	120	London	4.00 a.
8	1.00 a.	Guelph	1.00 a.				
	1.30 p.						

Special Rules for Wednesday, the 12th September, 1860.

No. 1.—NUMBERS 7, 8, 9 AND 10 TRAINS will not run.

No. 2.—No IRREGULAR TRAIL or ENGINE will be allowed on main line.

No. 3.—NUMBER ONE EXPRESS will wait at Shakespeare, the arrival of the Royal Train.

No. 4.—NUMBER TWO EXPRESS will leave Toronto at 11.30 a. m., and keep HALF AN HOUR behind the Royal Train at every Station.

No. 5.—A PILOT ENGINE will run exactly 10 MINUTES AHEAD of the Royal Train.

No. 6.—STATION AGENTS AND THEIR ASSISTANTS must be on duty and assist in keeping back any crowd of people at Stations.

No. 7.—CARE MUST BE TAKEN TO ENSURE SAFETY by every employee, and Signal Flags must be shown at each Station.

WHITE, if Track is clear.

GREEN, if Pilot Engine is less than 10 minutes ahead of Royal Train.

RED, if Track is obstructed.

~~~~~

**Acknowledge Receipt.**

**C. R. CHRISTIE,** CSTM Collection - **W. SHILLY,** Collection  
SUPERINTENDENT. GENERAL MANAGER



# FUTURE KING EDWARD VII 1901-1910



# 1878 VICE-REGAL SPECIAL – IRC

MARQUIS OF LORNE (4<sup>TH</sup> GG 1878-1883) HALIFAX TO OTTAWA.  
DUKE OF ARGYLL—MARRIED TO H.R.H. PRINCESS LOUISE – 4<sup>TH</sup> DAUGHTER OF QUEEN  
VICTORIA

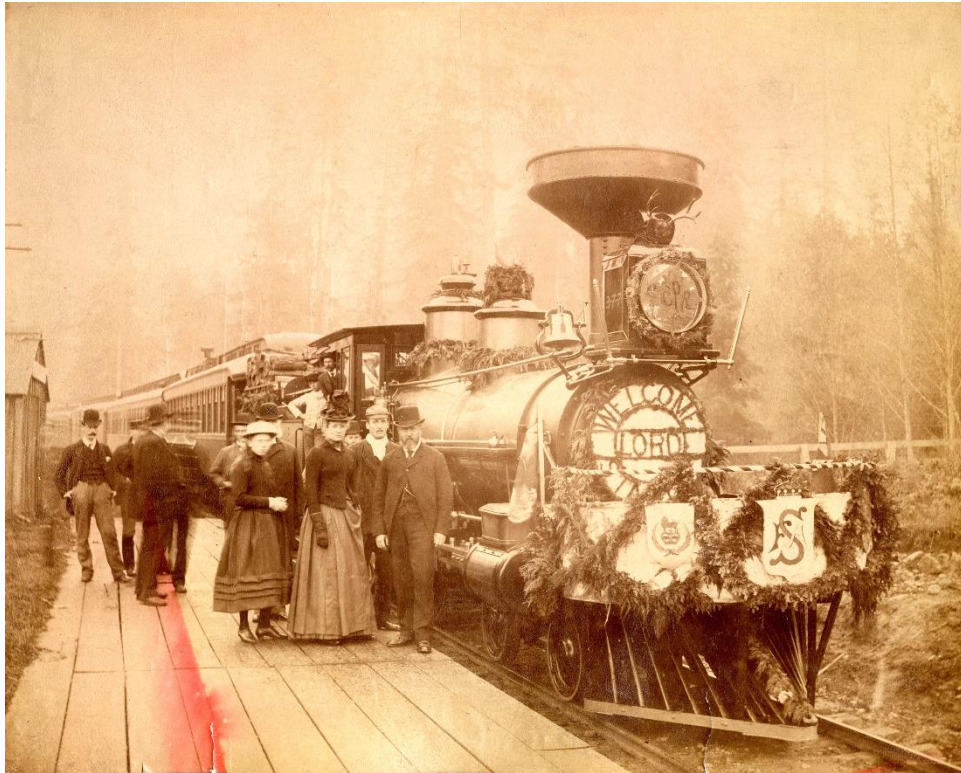


# PRINCESS LOUISE & MARQUIS OF LORNE



# 1889 VICE-REGAL LORD STANLEY GOVERNOR GENERAL 1883 TO 1893

Westward – in British Columbia



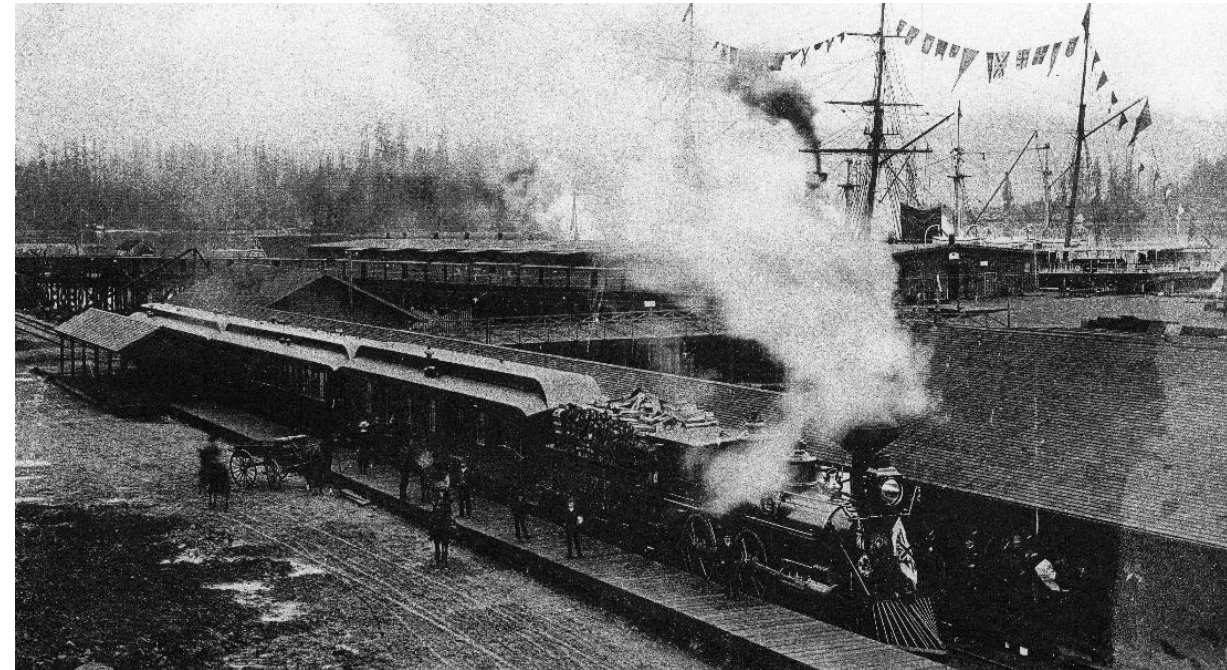
Eastward – at Calgary



# ROYAL TOUR – 1890 MAY 23 JUNE 04. 3<sup>RD</sup> AND LAST SON OF QUEEN VICTORIA

**HRH Duke & Duchess of Connaught  
(Prince Arthur) Vancouver to  
Montreal via Buffalo NY.**

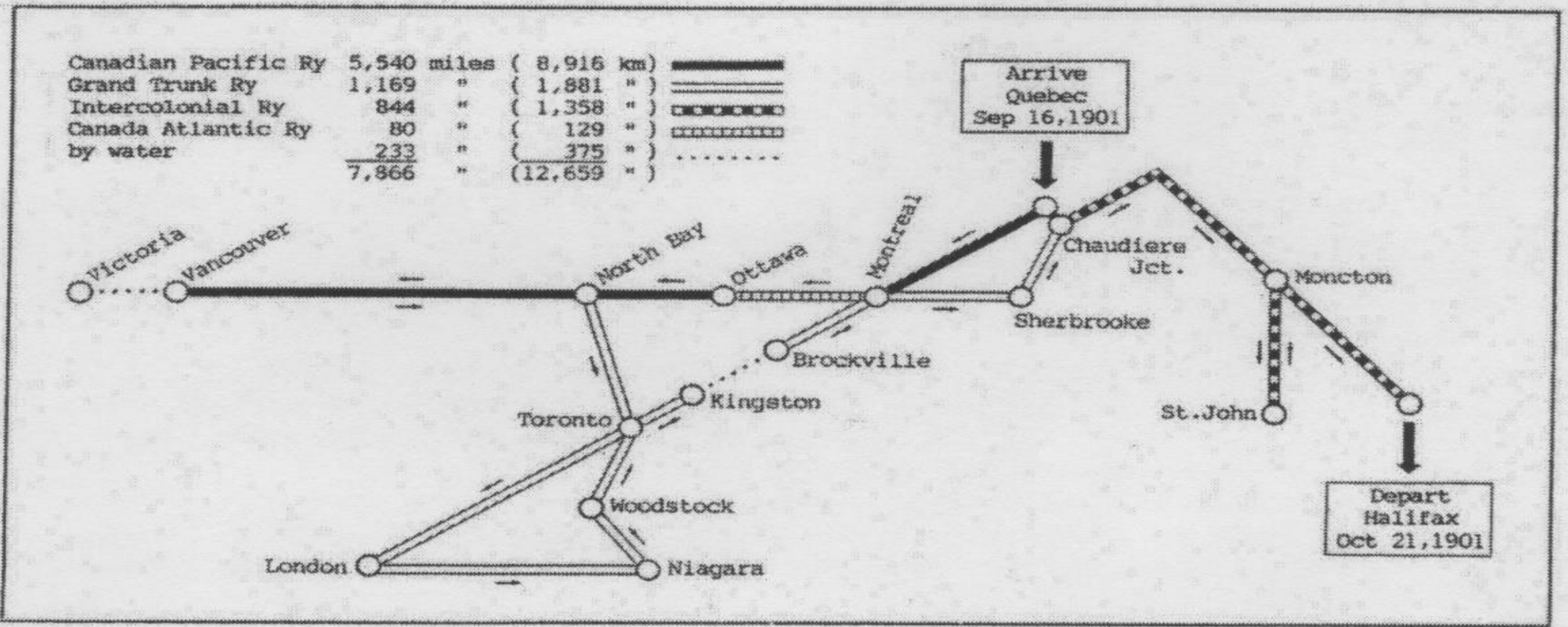
**Special train with baggage car and  
Saskatchewan & Metapedia**



# 1901 Royal Train – Visit of Their Royal Highnesses The Duke And Duchess of Cornwall and York to Canada Sept-Oct.

‘Future King George V & Queen Mary 1910 -1936’

Route of the 1901 Canadian tour of the Duke and Duchess of Cornwall and York.



**1901 ROYAL TRAIN SEPTEMBER 16 TO OCTOBER 21, 1901.  
SON OF KING EDWARD & HEIR APPARENT.  
TRAIN OPERATES IN TWO SECTIONS**

**Pilot Train – Governor General.  
Earl of Minto (GG 1898-1904). 10 cars**

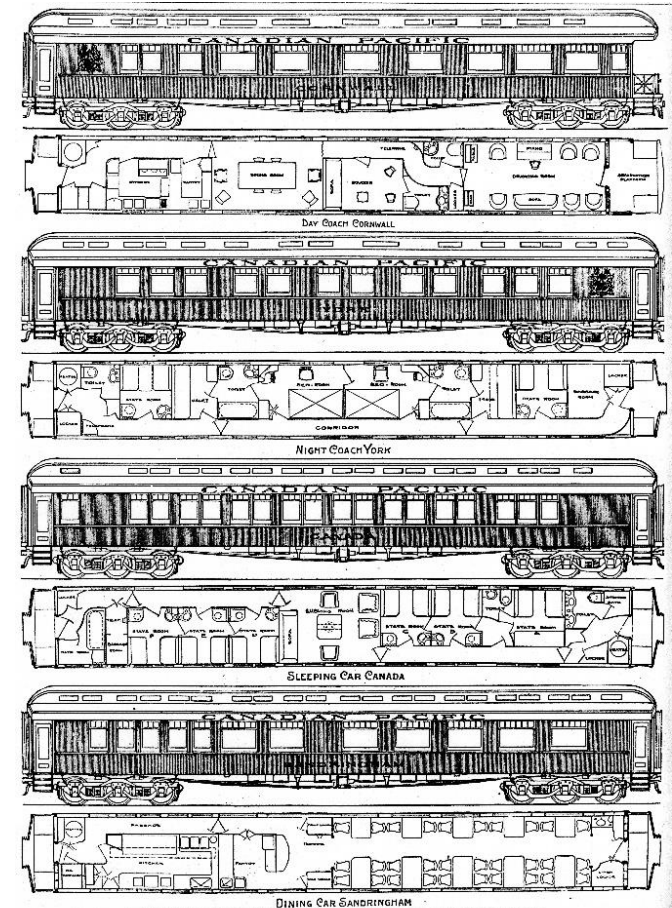
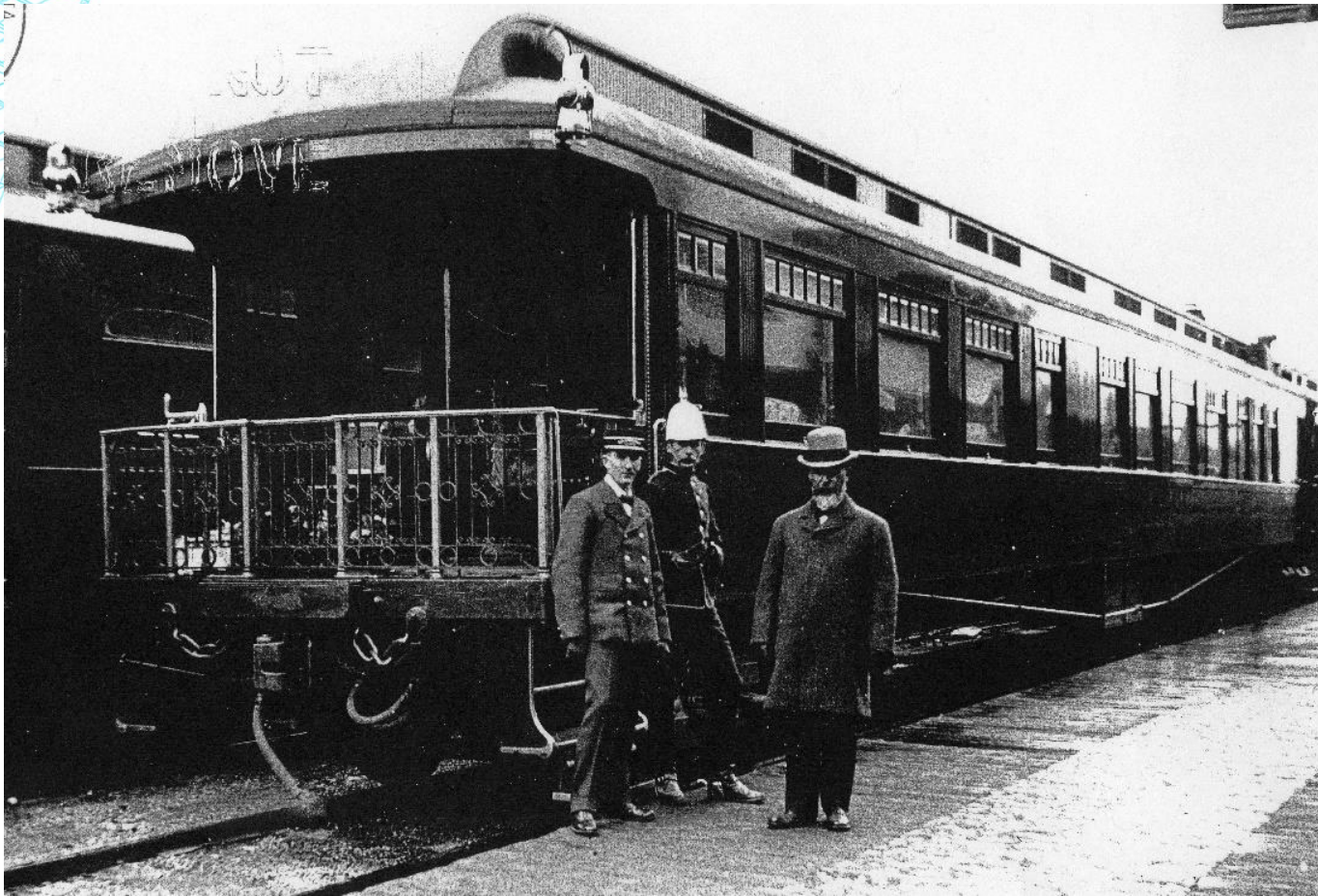
**Royal Train – H.R.H. Duke & Duchess  
of Cornwall. 10 cars**



# 1901 ROYAL TRAIN AT CALGARY

Superintendent Niblock and the Day car Cornwall at Calgary. Car built by CPR.

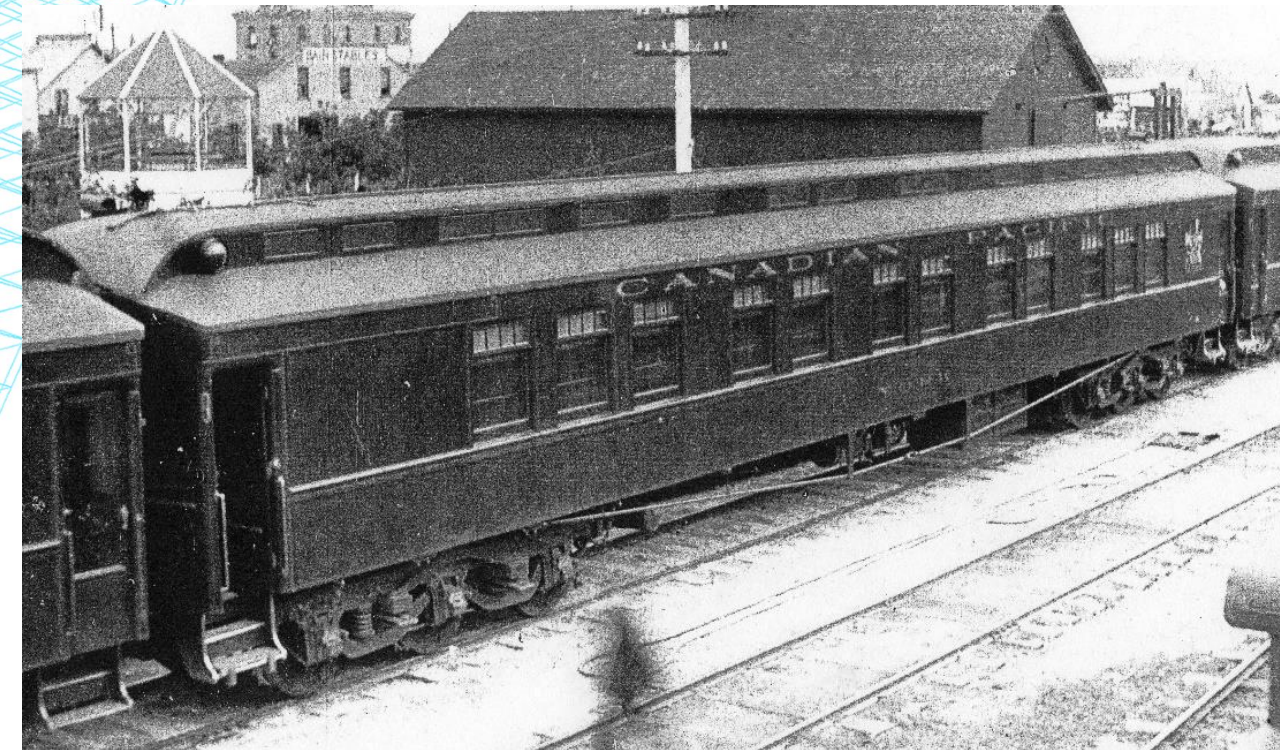
Four of ten car specially built for this train.

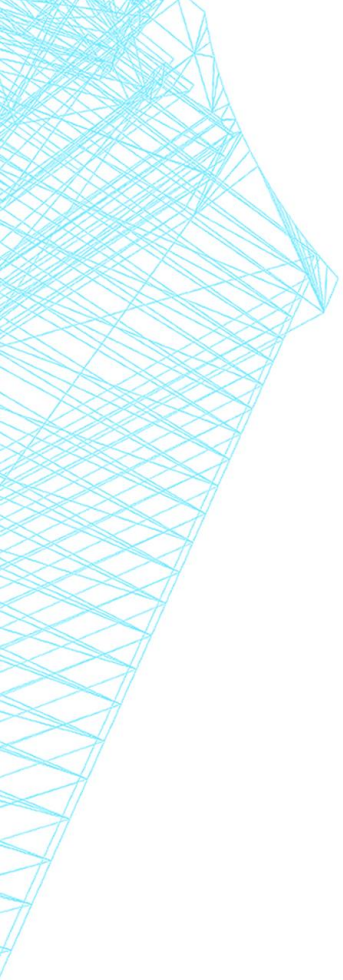


1901 – NIGHT CAR ‘YORK’  
6 CARS WERE BUILT BY CPR MCB WILLIAM APPS AND  
INTERIORS OF 4 CARS DECORATED BY KATE REED.

Car YORK at Calgary.

Car York at Heritage Park as  
CN 100 renumbered car CN ‘76’.





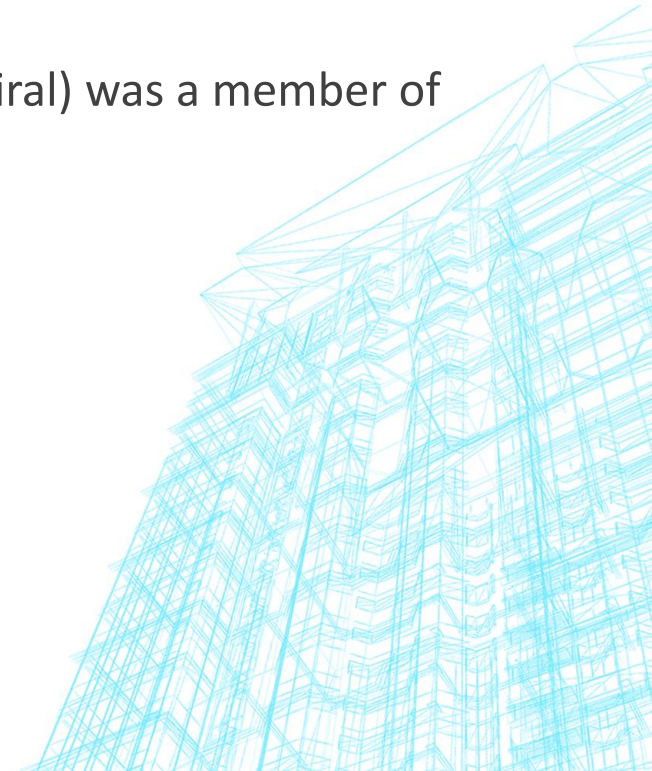


## JUNE 1907 – H.I.H. PRINCE FUSHIMI. 7 CAR SPECIAL TRAIN.

A member of the Japanese Imperial family.  
1875-1946 and Heir apparent.

Crosses Canada from England. Used British war  
ships on the seas.

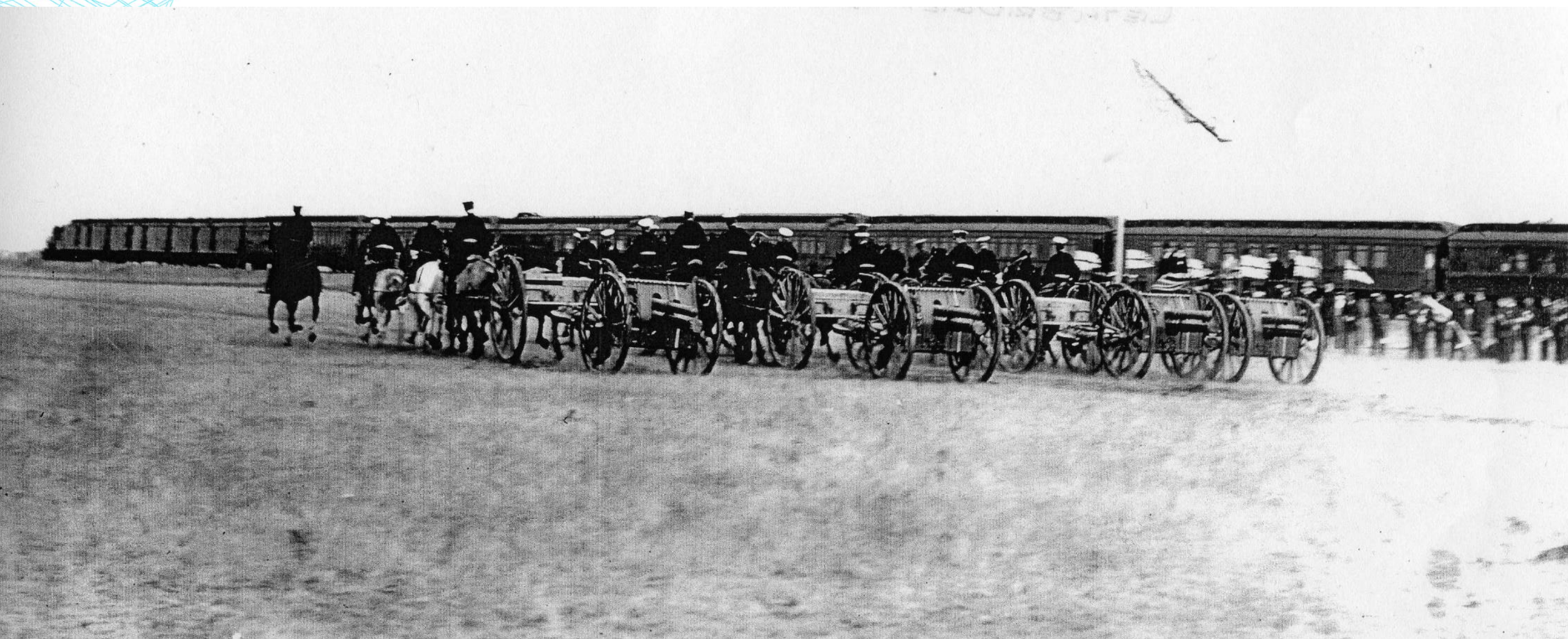
Isoroko Yamamoto (Admiral) was a member of  
the 1907 Royal train.



RE-NAMED TWO CARS ON THE 7 CAR ROYAL TRAIN –  
DINING CAR 'YODOGAWA' AND SLEEPING CAR 'KAGOSHIMA'.



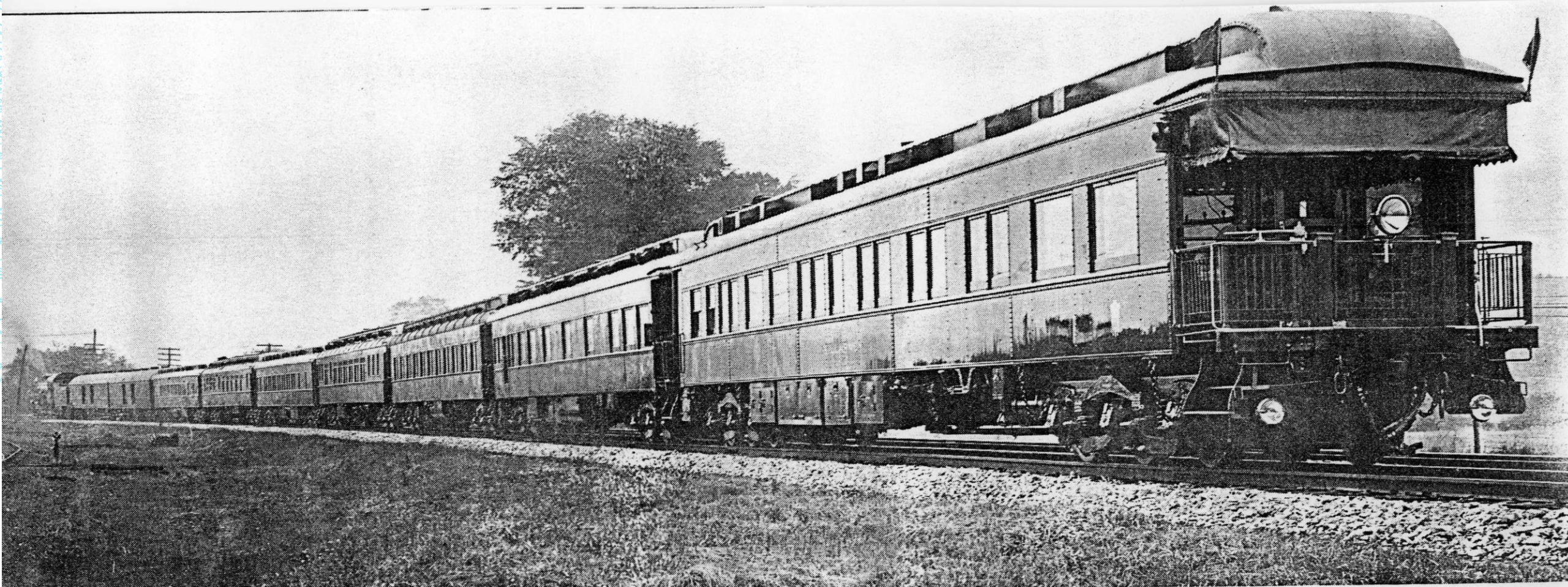
AUGUST & SEPTEMBER 1912 – DUKE OF CONNAUGHT (GG 1911-1916) CROSS CANADA 12 CAR SPECIAL SEEN HERE NEAR LETHBRIDGE



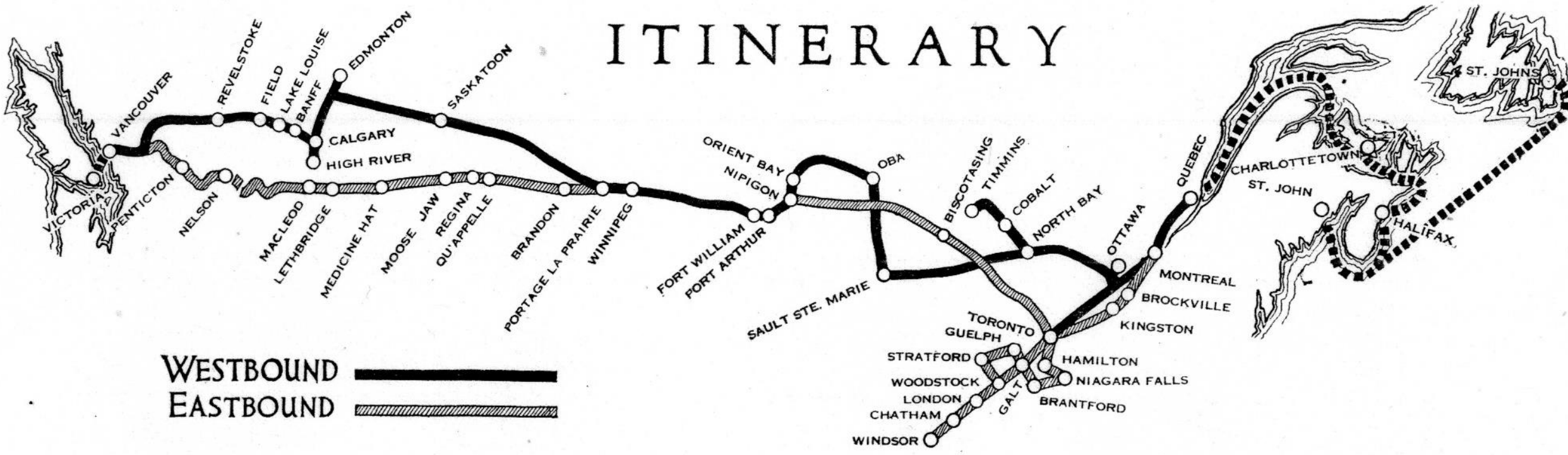
1912—H.R.H DUKE AND DUCHESS OF CONNAUGHT GOVERNOR  
GENERAL (1911-1916) AND HRH PRINCESS PATRICIA.



1919 ROYAL TRAIN - H.R.H. PRINCE OF WALES –  
PRINCE EDWARD  
9 CARS – ALL OF STEEL CONSTRUCTION



# 1919 – H.R.H. PRINCE OF WALES PRINCE EDWARD ELDEST SON OF KING GEORGE V & HEIR APPARENT



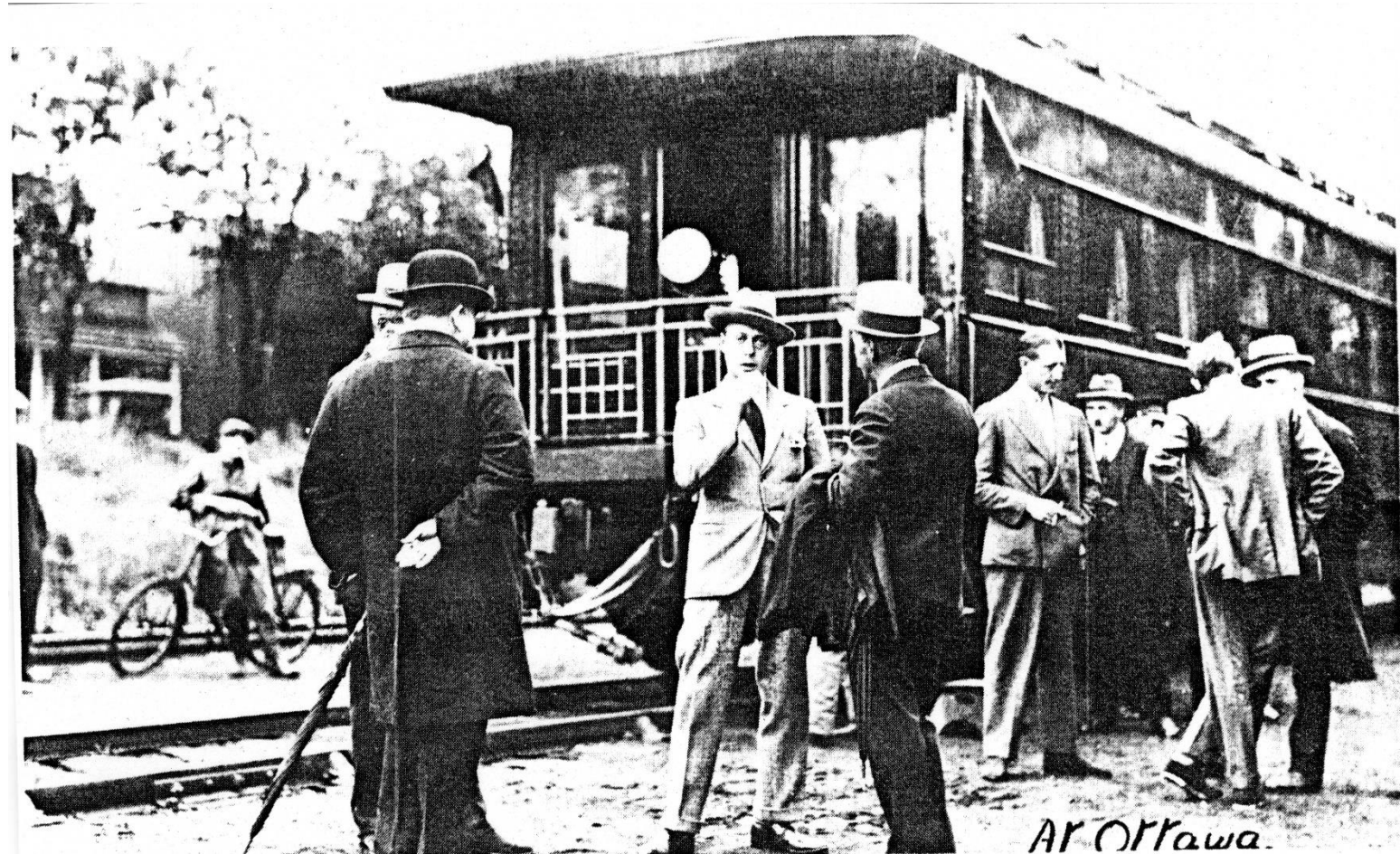
EDWARD PURCHASES THE 'BAR U' RANCH.  
RENAMED IT THE 'EP' RANCH.  
LOCATED WEST OF HIGH RIVER ALBERTA.



1923 SEPT-OCT – PRINCE OF WALES – H.R.H. PRINCE EDWARD –  
FOUR CAR SPECIAL TRAIN ARRIVING CALGARY TO VISIT THE ‘EP’  
RANCH.



SEPTEMBER 1924 HRH PRINCE OF WALES – ‘BARON OF RENFREW’.  
3<sup>RD</sup> OF 6 VISITS - 9 CAR SPECIAL ASSEMBLED IN USA.  
TO VISIT THE ‘EP’ RANCH.



AUGUST-SEPTEMBER 1927- ROYAL TRAIN AT BRANDON  
FUTURE KING, HIS BROTHER AND THE RH PM OF GREAT  
BRITAIN – QUEBEC TO BANFF & RETURN.



# PRINCE OF WALES OPENS NEW TORONTO UNION STATION AUGUST 06, 1927.



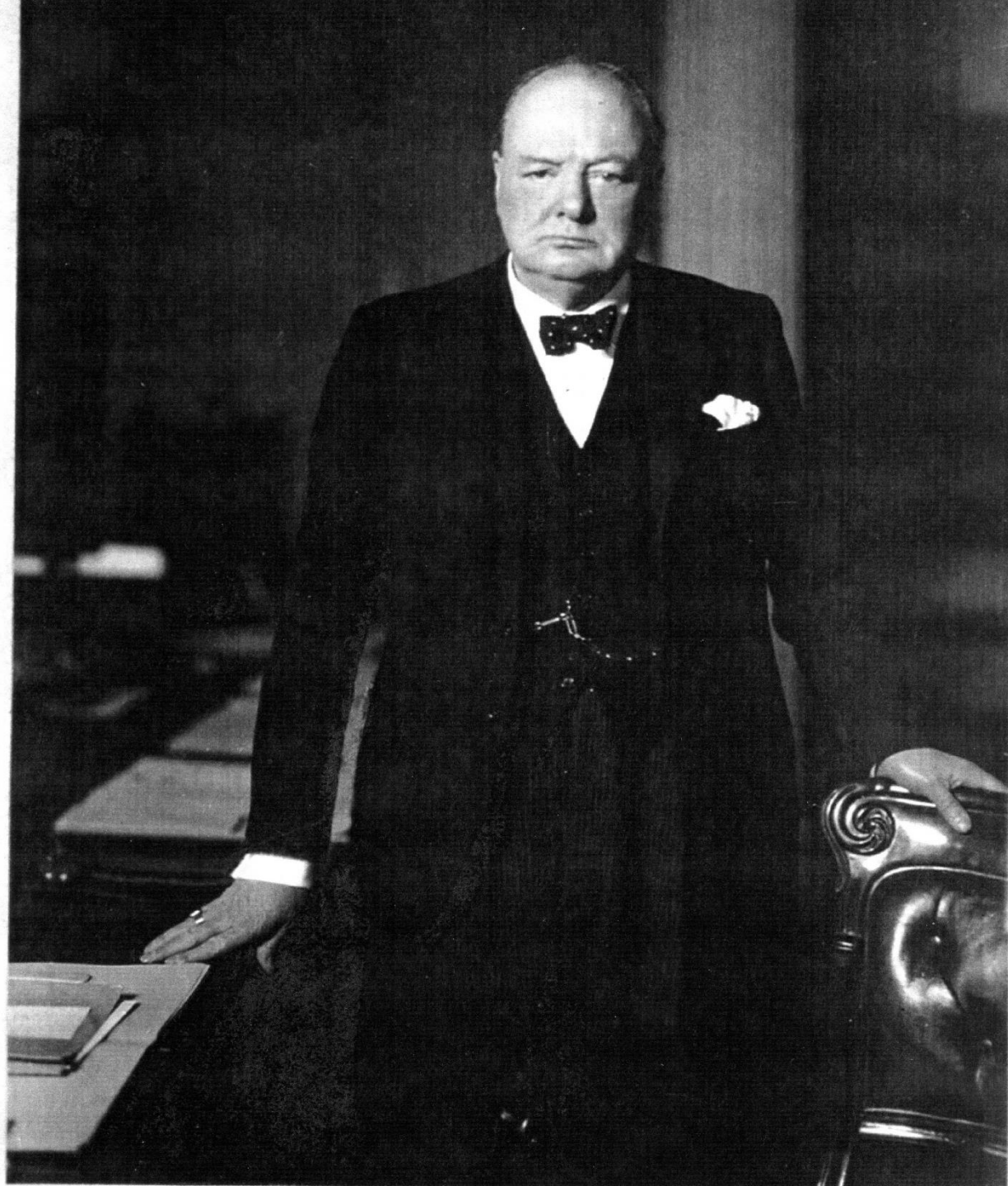


1927 – HRH PRINCE OF WALES  
AND HIS YOUNGEST BROTHER  
HRH PRINCE GEORGE (DUKE OF  
KENT) AND THE  
RIGHT HONOURABLE PM OF  
GREAT BRITAIN.

Main party traveled to Banff while Prince  
Edward travelled to the 'EP' Ranch.

# CPR TRAIN STAFF FOR 1927 ROYAL TRAIN AT TORONTO, ONT.





CHURCHILL  
AUGUST 12 – SEPT 4 QUEBEC TO  
VANCOUVER BC  
SAN FRANCISCO TO NEW YORK –  
OCTOBER BLACK FRIDAY.



April 1931 King and Queen of Siam (Thailand)  
(King Rama VII - reign 1925-1935)  
Departed Vancouver for Ottawa April 16, 1931.



# 1936 – PRESIDENT FDR SAINT ANDREWS TO QUEBEC TO HYDE PARK VIA MONTREAL. VISITS WITH GG – 8 CAR SPECIAL

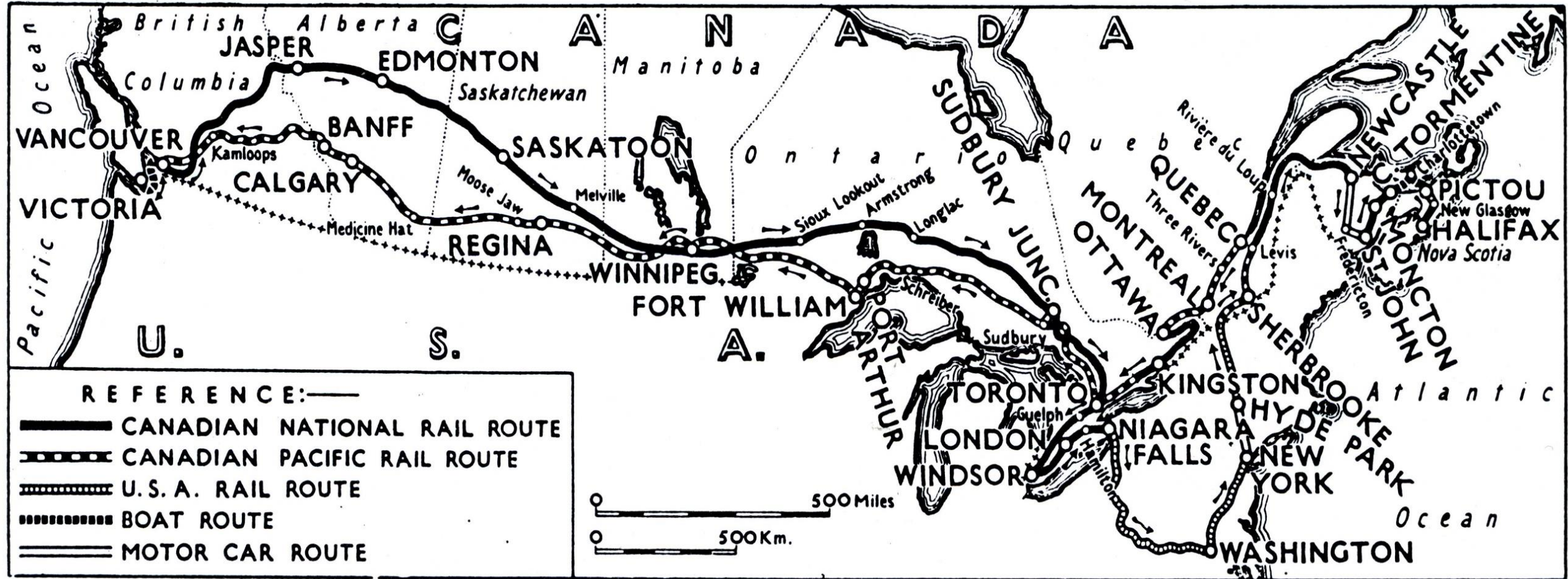
**USS Sequoia – Traveled from  
summer home in New Brunswick**



**Summer home on Campobello  
Island in New Brunswick**



# 1939 – KING GEORGE VI & QUEEN ELIZABETH





# 1939 - ROYAL HUDSON ATTENDS WORLDS FAIR AFTER ROYAL TOUR



# 1939 ROYAL TRAIN DEPARTS CALGARY MAY 25, 1939. (EDWORTHY PARK)



PM MACKENZIE KING USED THE CAR 'WENTWORTH'  
NO 5. (CAR NO 5 ON THE RIGHT)  
INSISTED ON 'NO' AIR CONDITIONING.



1939 – PSEUDO ROYAL TRAIN – FREDERICTON  
TO FAIRFIELD NB (SAINT JOHN) JUNE 13, 1939. 6 CARS  
KING AND QUEEN USE THE PRIVATE CAR 'THOROLD'



# ROYAL TRAIN TRAVELS TO WASHINGTON, DC AND HYDE PARK, NEW YORK – VISIT WORLD FAIR.



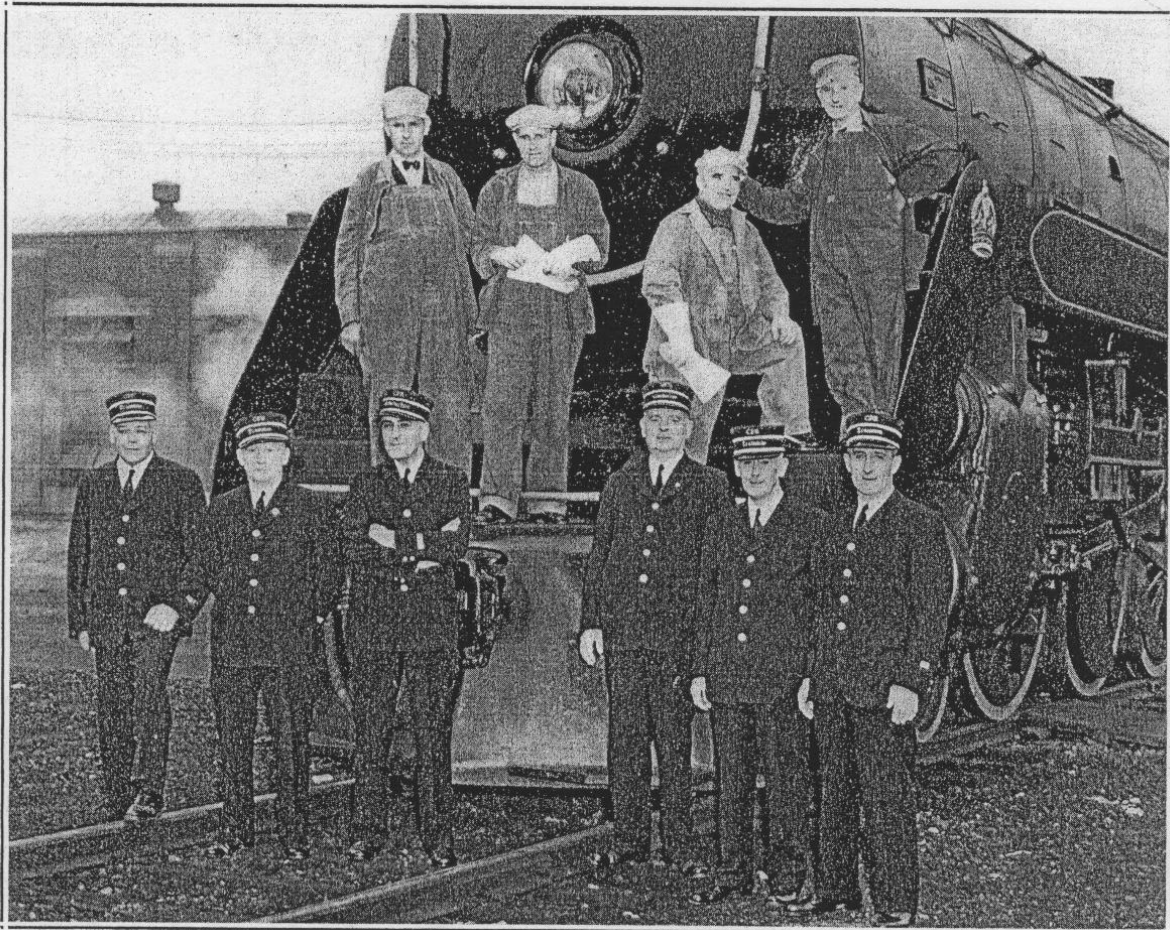
1941 DUKE AND DUCHESS OF WINDSOR  
FROM NY VISIT THE 'EP' RANCH WEST OF HIGH RIVER



# AUG 1943 FDR FISHING TRIP TO LAKE HURON – 10 CAR TRAIN TO BIRCH ISLAND

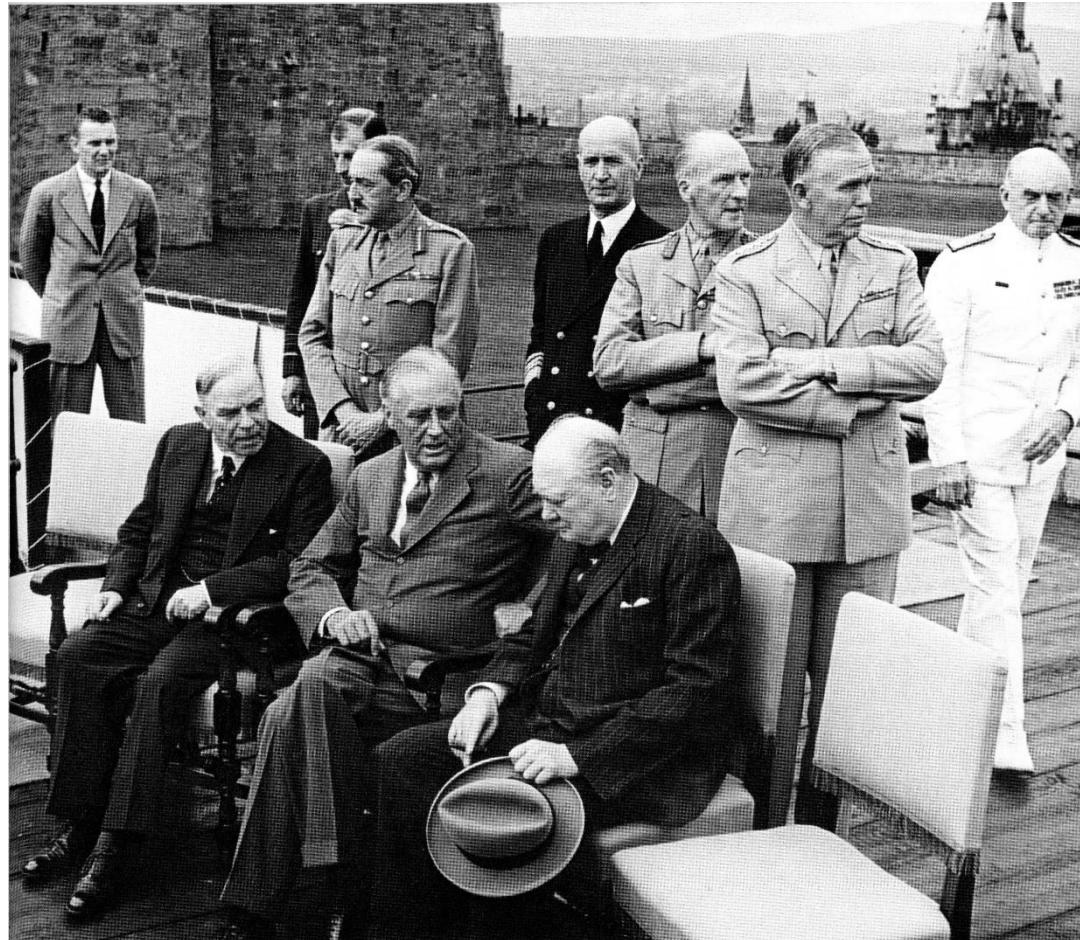
CANADIAN PACIFIC STAFF BULLETIN

## The Men Who Handled President Roosevelt's Train



Scene at WILLISVILLE, Ont.

# 1943 – FIRST QUEBEC CONFERENCE ROOSEVELT AND CHURCHILL MEET AT QUEBEC



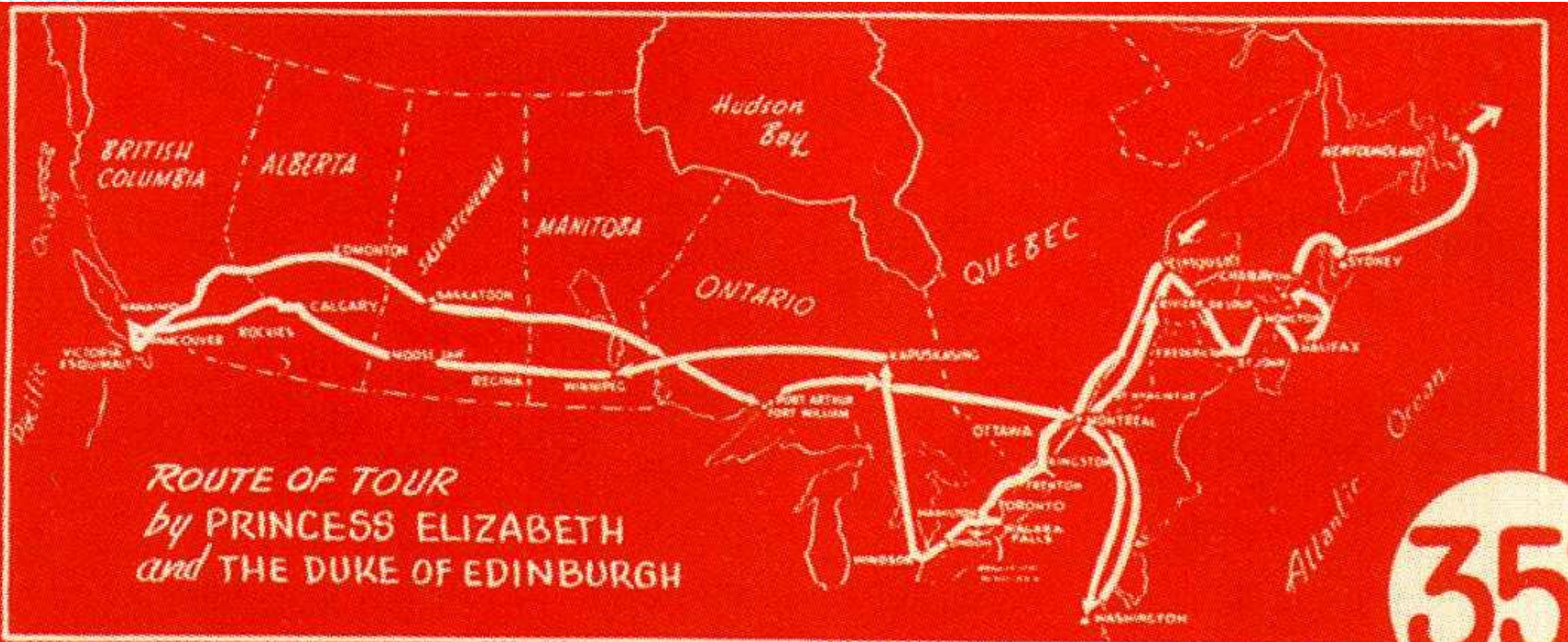
# 1943 – CHURCHILL'S "RED TRAIN" HALIFAX TO QUEBEC TO MEET FDR



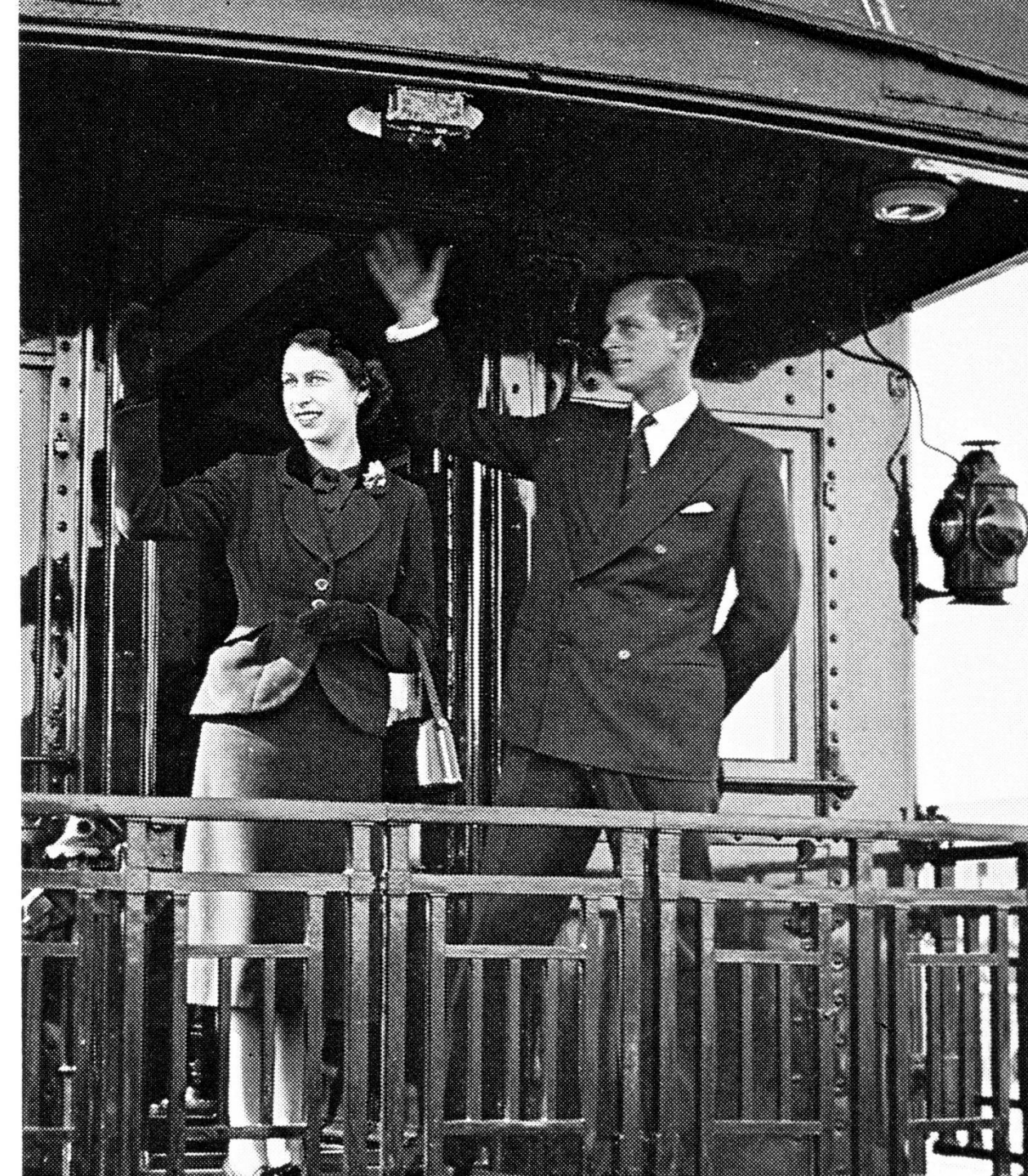
# APRIL 1950 – H.R.H. DUKE & DUCHESS OF WINDSOR – VISIT HIGH RIVER - NEW YORK TO CALGARY TO QUEBEC



# 1951 ROYAL TRAIN HRH PRINCESS ELIZABETH & PRINCE PHILIP



# 1951 PRINCESS ELIZABETH & PRINCE PHILIP



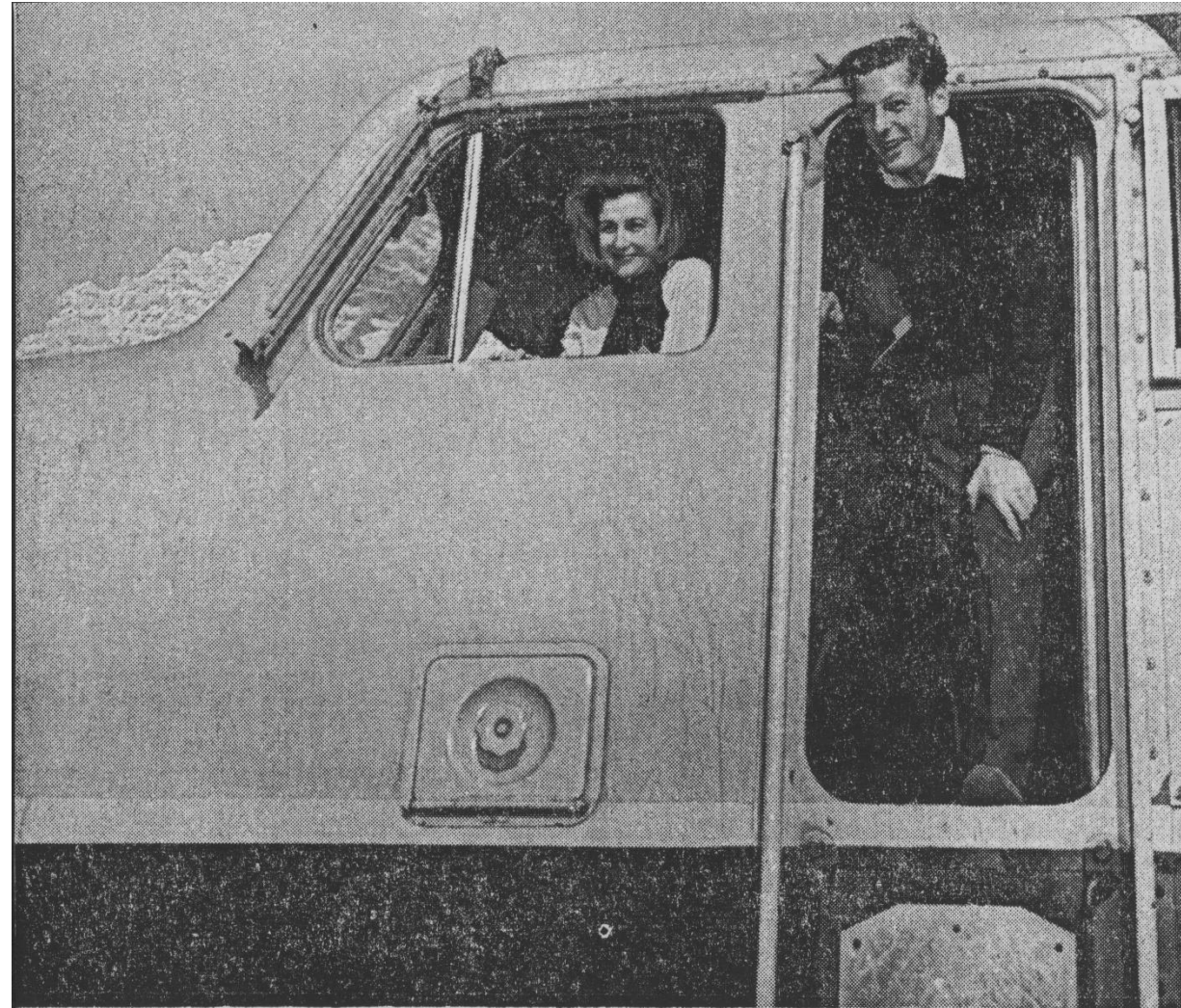
APRIL 11-21 1953 CROWN PRINCE AKIHITO – EMPEROR  
OF JAPAN – TRAVELED TO QE II CORONATION.



# 1958 HRH PRINCESS MARGARET VANCOUVER TO CALGARY



1967 – PRINCESS ALEXANDRA  
BANFF TO VANCOUVER MAY 2-3 1967



# 1982 ROYAL TRAIN WINNIPEG TO BRANDON AND RETURN – PRINCESS ANNE - LAST ROYAL TRAIN OPERATED ON CPR.

