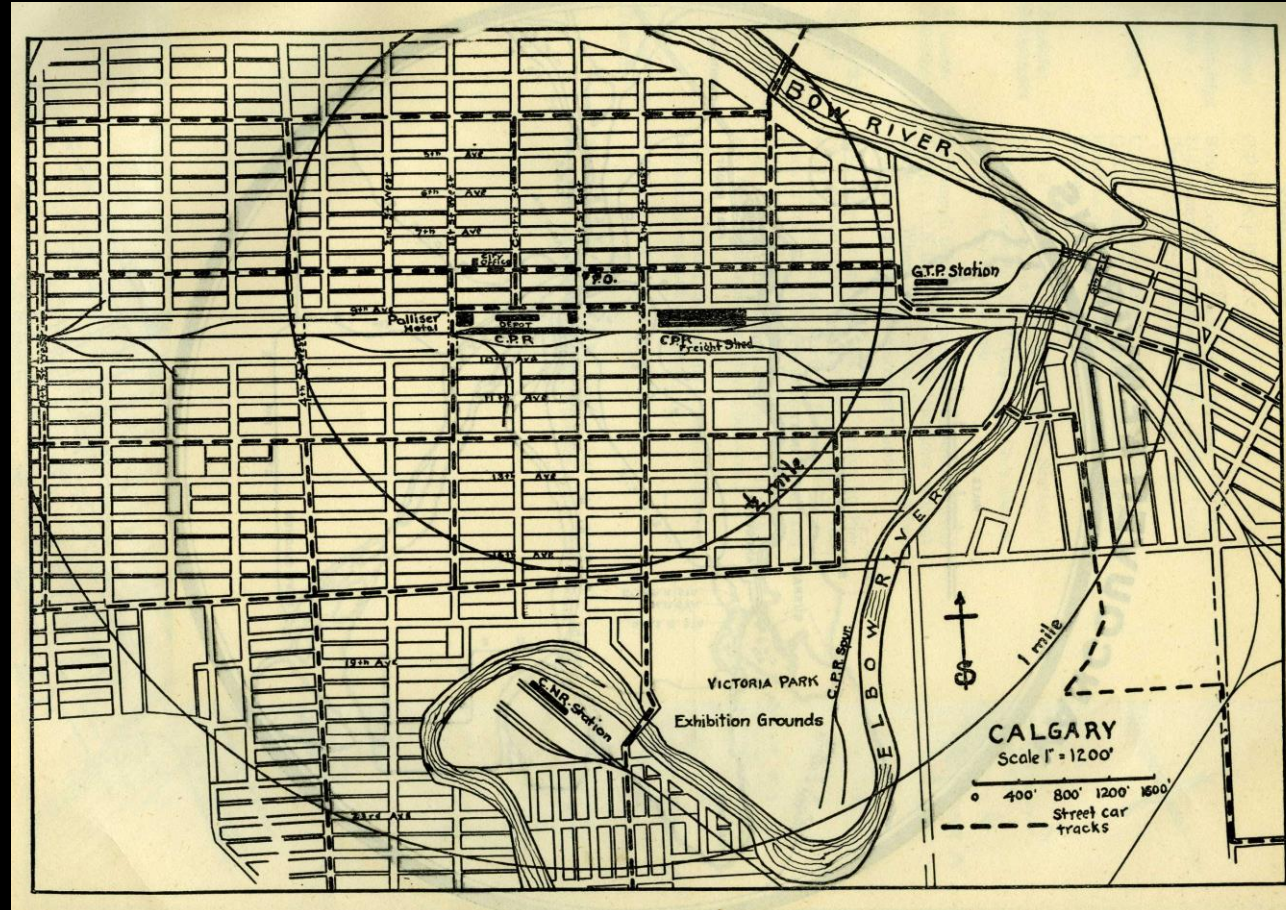
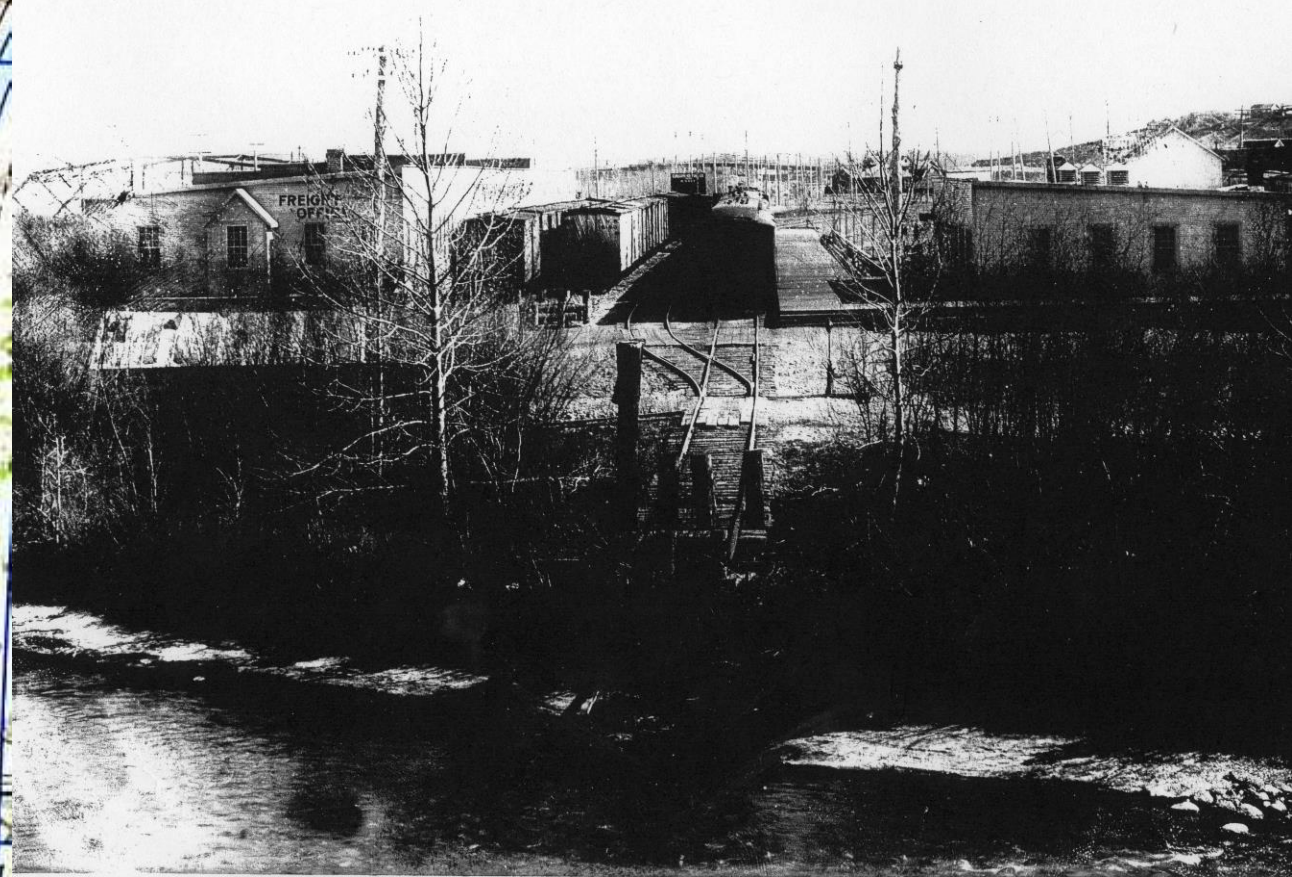
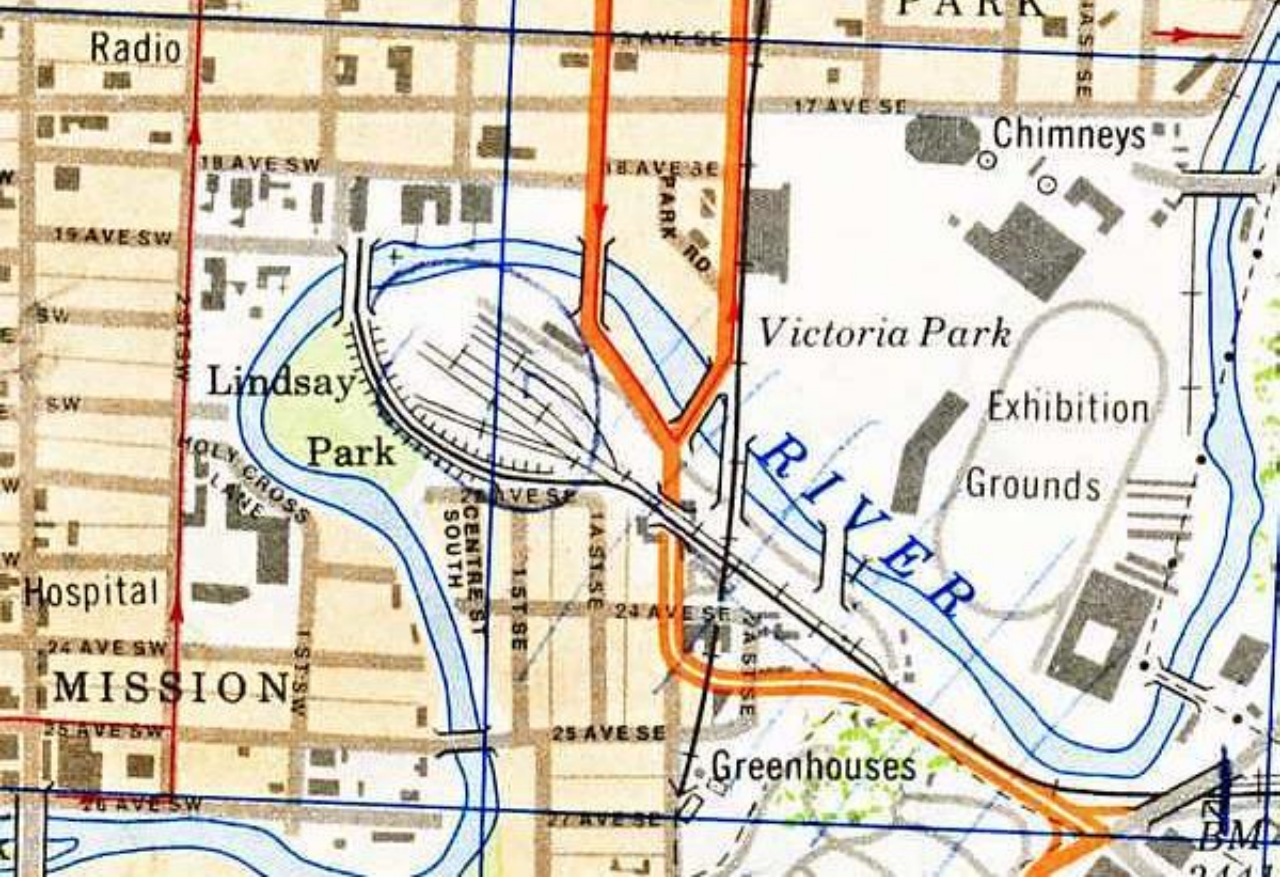


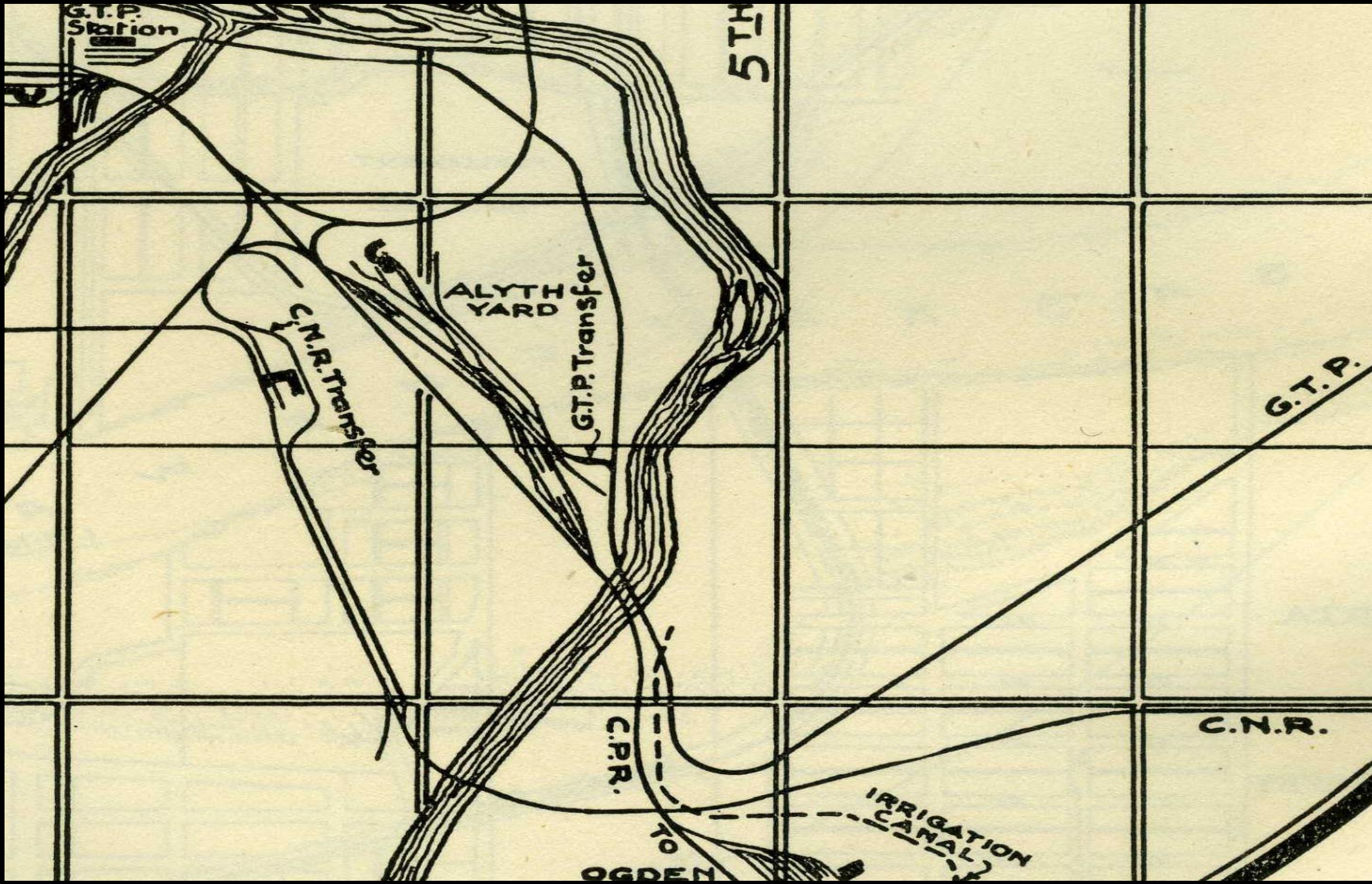
CNR STRUCTURES AND BRIDGES IN CALGARY

THE 'INVADERS' ARRIVE FEBRUARY 1914.
GRAND TRUNK PACIFIC AND CANADIAN
NORTHERN RY.





FIRST TO ARRIVE IS THE CANADIAN NORTHERN RAILWAY - 12 FEBRUARY 1914.





THE CNOR CAME IN FROM DRUMHELLER AND
JANET.

BRIDGE OVER CPR MAIN
LINE AND IRRIGATION
CANAL. A MALTY STRUCTURE
BRIDGE WITH EVERYTHING.





PASSED OVER
THE
IRRIGATION
CANAL THE CPR
& THE CMR.

Built 1913



1950
2016



C.N.R. No 4-1336 1 MILE NORTH OF MACLEOD JUNCTION - ALTA CANADA

SUNDAY NOVEMBER 23-1924



284.

BRIDGE OVER THE BOW RIVER



ON THE OLD
(1914) CNOR
GRADE TO THE
COMINCO
PLANT,
ESTABLISHING
MACLEOD JCT.





THE BRIDGE OVER CPR'S MACLEOD SUB

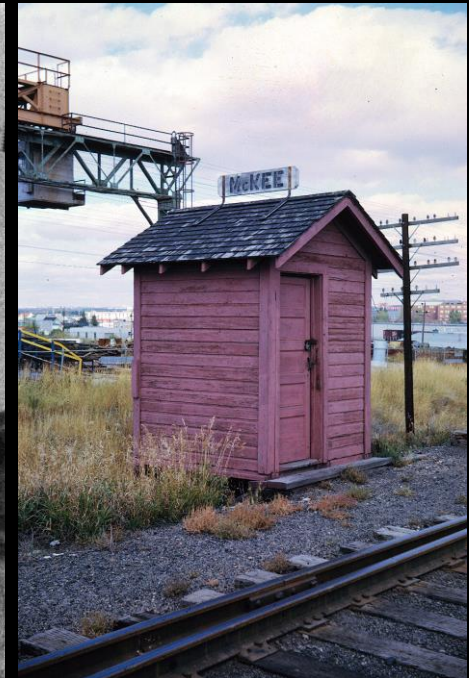




BRIDGE OVER THE CPR MACLEOD SUBDIVISION AT MCKEE.



AN ENGINE HOUSE WAS BUILT IN THE MANCHESTER
AREA CALLED MCKEE YARD.



C.N.R. No 14-1126 1/2 MILE OUT OF CALGARY, ALTA TUESDAY EVENING 6:40 P.M. APRIL 18-1925



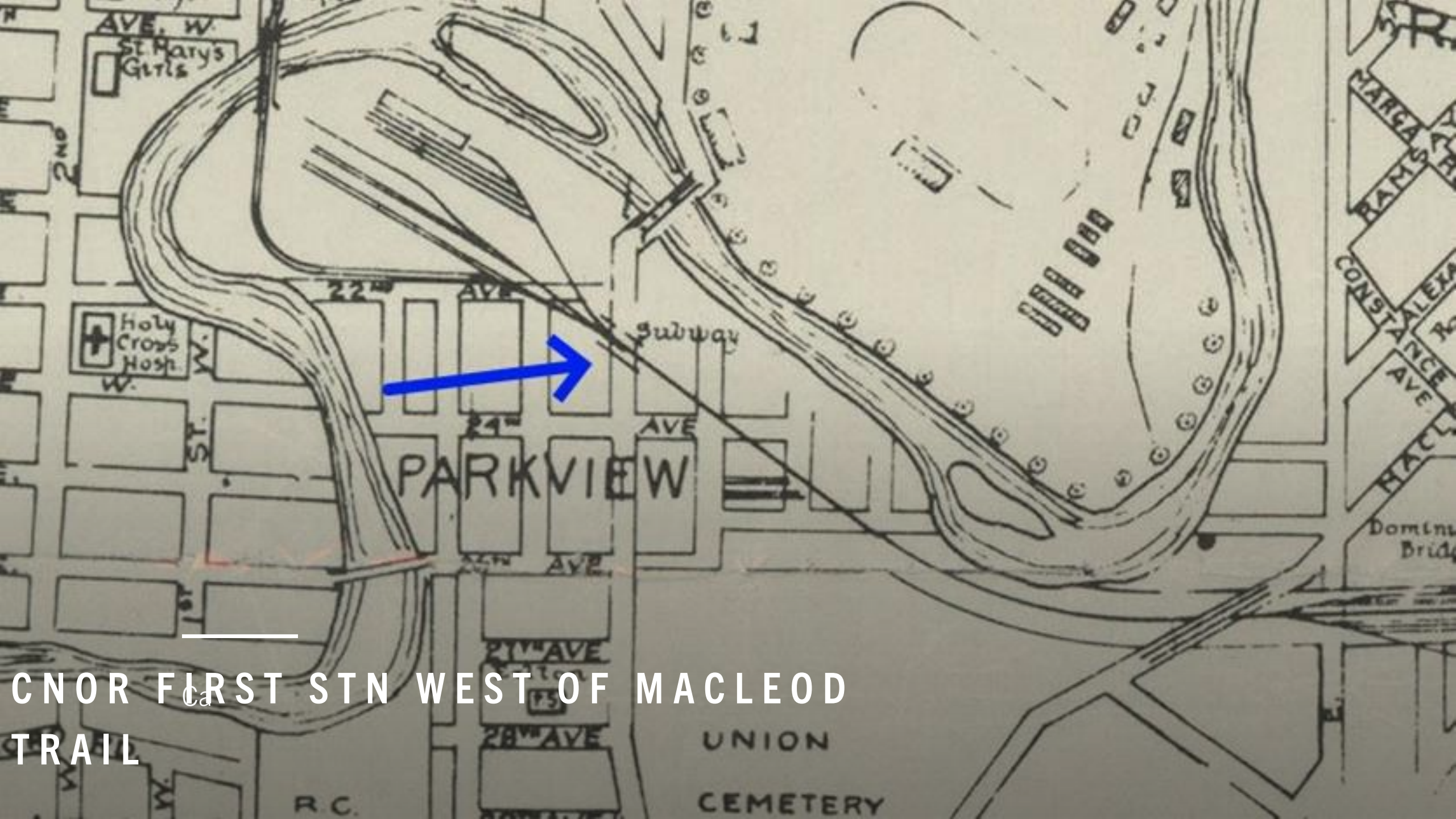
156



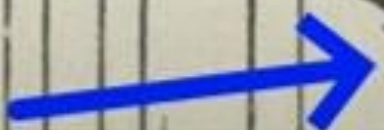
CAN. N° 14- 1150 1/2 MILE out of SALGARY ALTA FRIDAY MAY 1-1920



481



CNOR FIRST STN WEST OF MACLEOD TRAIL



PARKVIEW

Subway

UNION CEMETERY

22nd AVE

24th AVE

21st AVE

28th AVE

AVE. W.
St. Marys
Gltis

Holy
Cross
Hosp.

MARGARET
RAMSAY

CONSTANCE
AVE

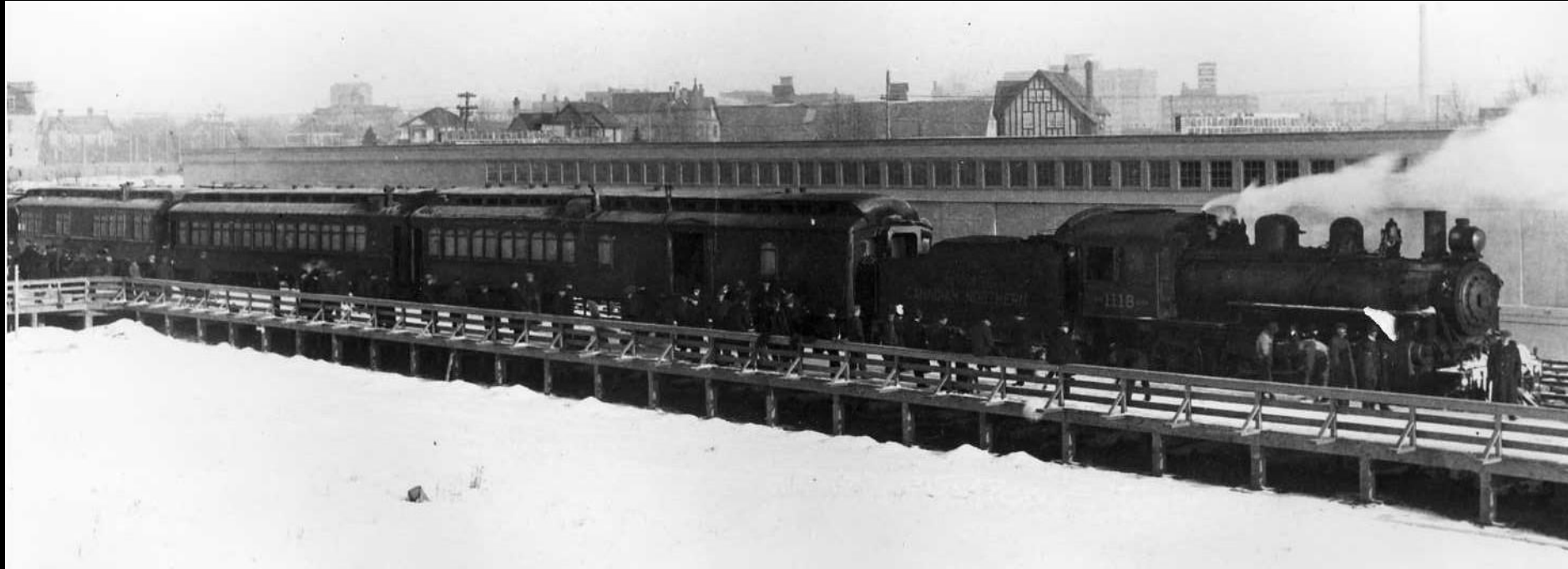
HAUL

Domln
Bridg

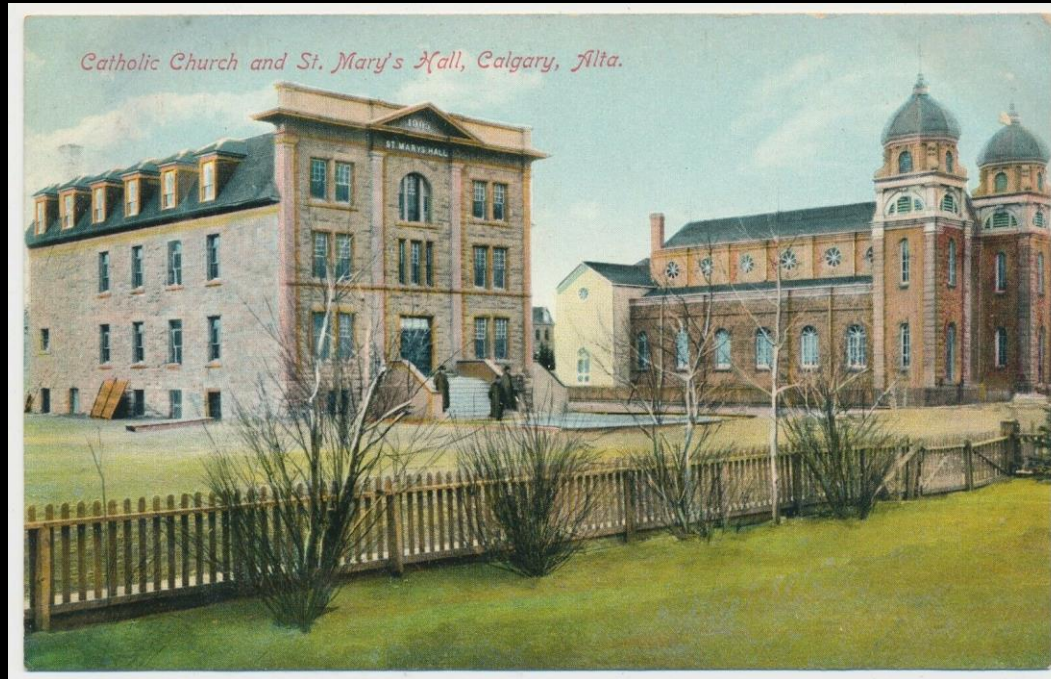
R.C.



**FIRST CNOR PASSENGER TRAIN ARR CALGARY
1914 FEBRUARY 12, THURSDAY.**



MEANWHILE THE CANADIAN NORTHERN ACQUIRES ST MARY'S HALL FROM THE CHURCH FOR USE AS A STATION.



A FREIGHT AND EXPRESS SHED WAS ADDED.



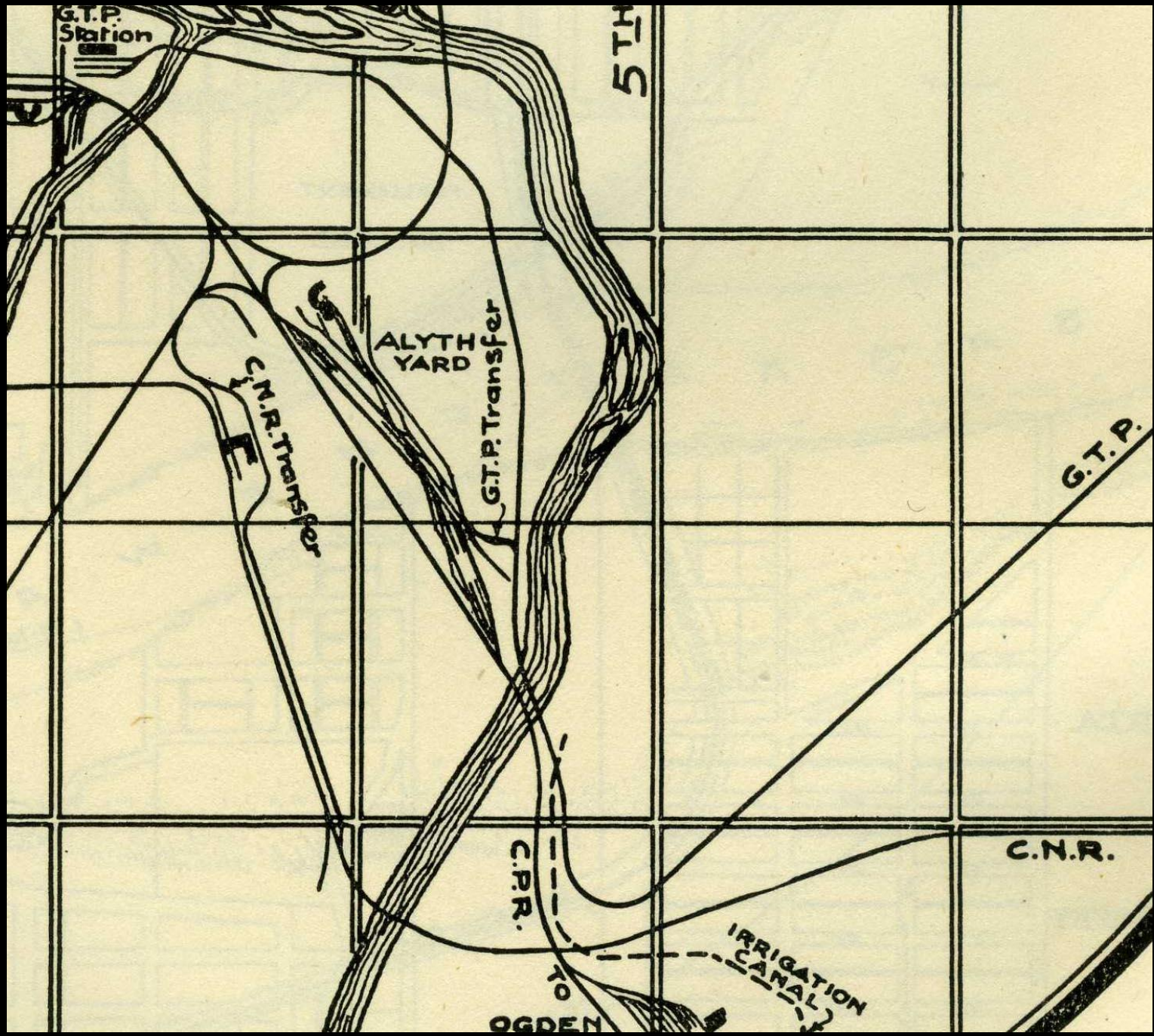
SPECIAL TRAIN FOR DB HANNA 1924



BC Archives Photo # C-06433 - Supplied for Research Only. No Duplication. Fees May Apply for Other Use.

**SECOND TO ARRIVE WAS THE GRAND TRUNK
PACIFIC 1914 FEBRUARY 22, SUNDAY.**





G.T.P. Station

5TH

C.N.R. Transfer

ALYTH YARD

G.T.P. Transfer

G.T.P.

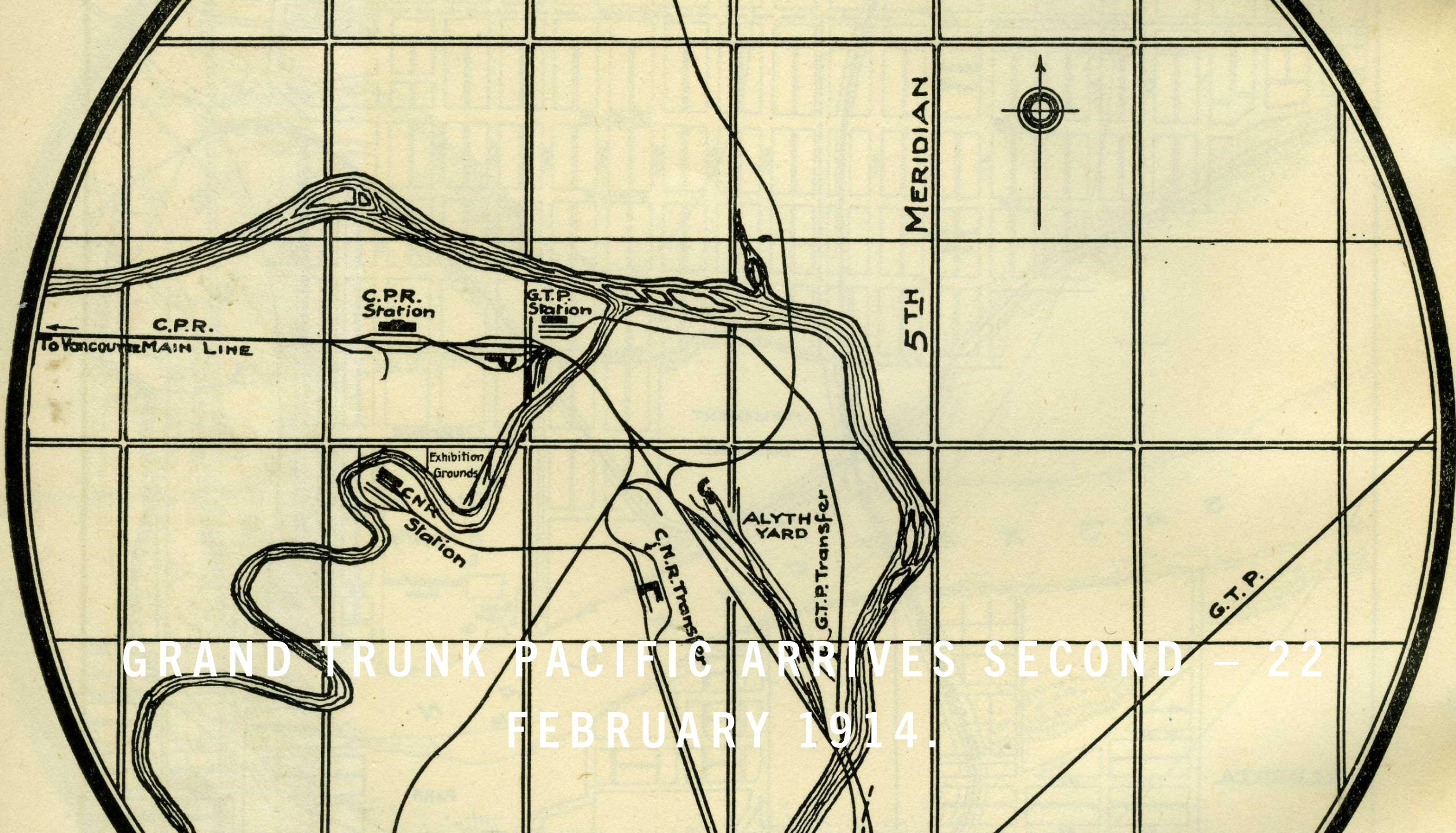
C.N.R.

C.P.R.

IRRIGATION CANAL

OGDEN

10



GRAND TRUNK PACIFIC ARRIVES SECOND - 22
FEBRUARY 1914.

A PROPER
STANDARD GTP
STATION WAS
ERECTED AT
HUBALTA ON THE
EAST SIDE OF WHAT
BECAME
FORESTLAWN.



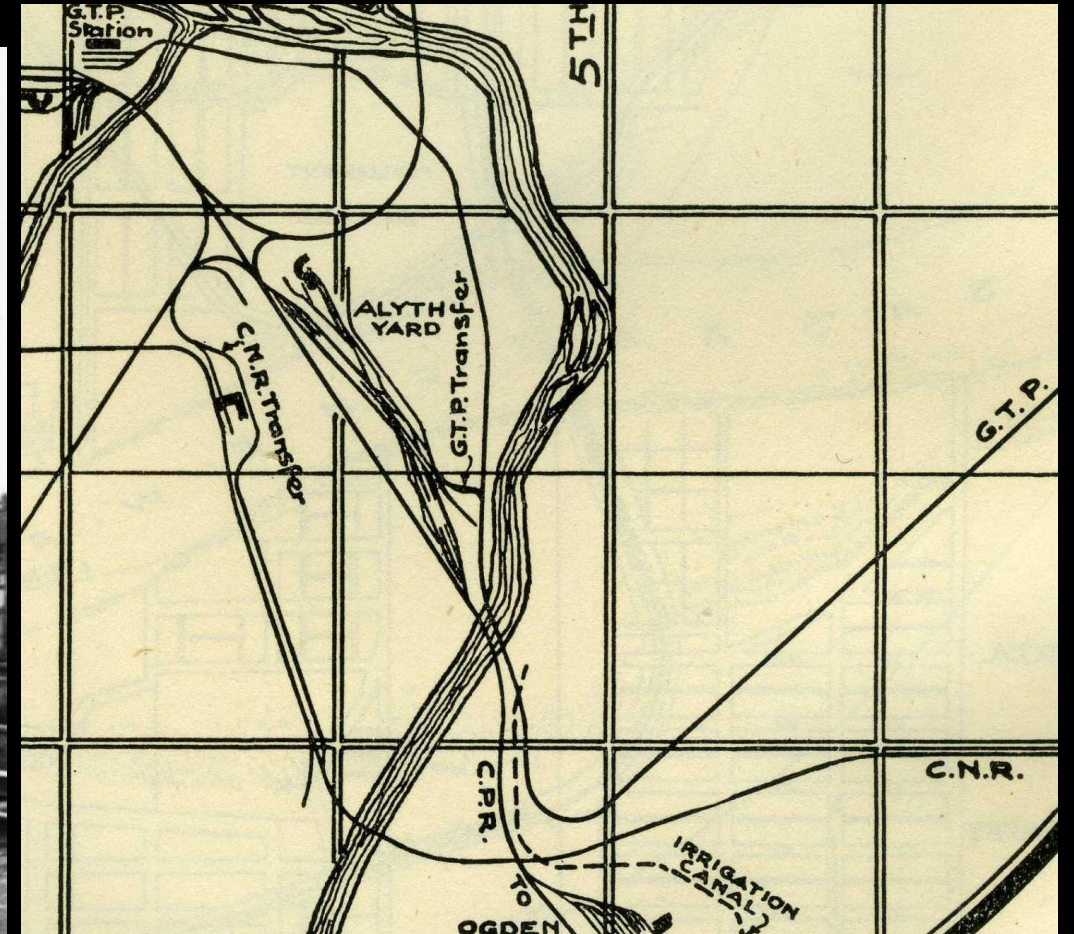
**CNR (GTP) WOOD TRESTLE OVER WID
IRRIGATION CANAL (1904)**



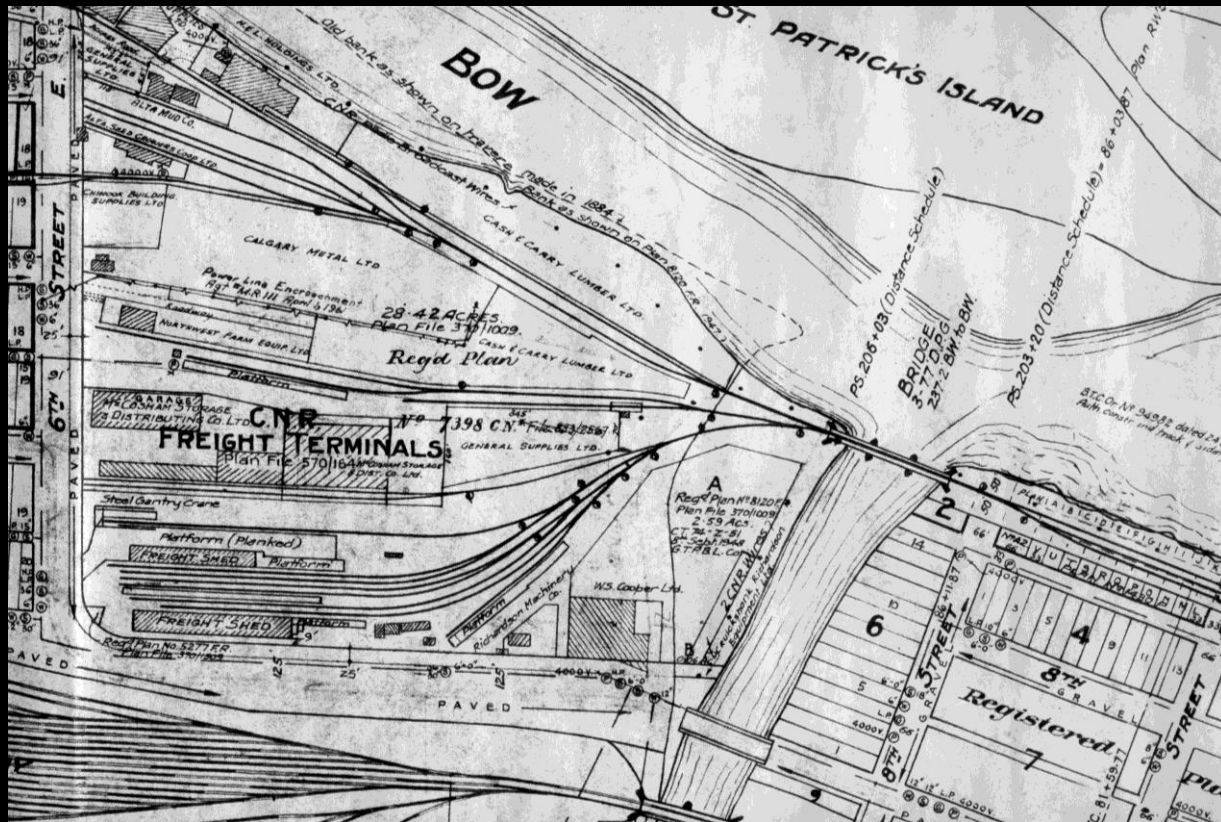
GTP BRIDGE OVER THE BOW RIVER



BY 1923 THE NEW CANADIAN NATIONAL HAD
ABSORBED THE GTP & CNOR.
A NEW INTERLOCKING TOWER AT BENGAL DIAMOND
WITH CPR RED DEER SUB.



THE GTP STATION GROUNDS BECAME A CNR INDUSTRIAL SITE.



GRAND TRUNK PACIFIC RAILWAY



A TEMPORARY GTP STATION IS PLACED NEAR THE
SITE OF FORT CALGARY.

**GTP'S SHACK
CALGARY STATION.**



Glenbow Archives NA-4680-6



GTP DID ESTABLISH A THREE-STALL ENGINE HOUSE.





CANADIAN NATIONAL RAILWAYS
ADDS GTP, NTR AND CGRLYS.

1924

**JUNCTION MADE WITH THE GTP & CNOR MAIN
LINES WAS AT BARLOW JCT. THIS IS LATER
WAS RENAMED SARCEE JCT.**



SARCEE YARD OFFICE



WYE NORTH SWITCH ESTABLISHED WITH THE ADDITION OF SARCEE YARD.



LAST PASSENGER TRAIN JULY 03-1971



